

Your Essentials

Text Us

808-425-9010

If we can help with anything, anytime, just text us and provide your name and room number.

HOUSEKEEPING SERVICES

Customize Your Clean. For your comfort, we have arranged for your room to be automatically serviced by housekeeping every 5th day of your stay.

To schedule your guest room cleaning before or after the 5th day, please dial ext 44 or text us at 808-425-9010 the day prior.

WHO TO CALL

(Dial extensions from your guest room or lobby house phone)

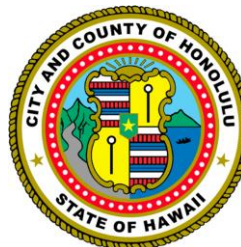
- **Text us at 808-425-9010**
- Emergency: 21
- Bell Desk: 41
- Business Center: 74160
- Concierge: 30 or 808-846-6199
- Front Desk: 46
- Guest Services: 54
- Housekeeping: 54
- In-Room Delivery –Wiki Wiki To You: 75253
- Lost and Found: 54
- Manager on Duty: 23
- Mandara Spa: 74370
- SpeediShuttle: 877-242-5777
- Taxi: 808-233-3333
- Tours & Activities: 808-846-6199

CHECK-IN TIME: 4 pm
CHECK-OUT TIME: 11 am



EXPRESS CHECK-OUT: For contactless Check-Out, just text us at 808-425-9010 and drop your room keys in our Express Check-Out Boxes located in the Main Lobby, Rainbow Tower Lobby, Tapa Elevator Landing, Diamond Head Tower Lobby near both elevator banks. Folio/Receipts are available via your Honors App

Hilton Hawaiian Village Waikiki Beach Resort
2005 Kalia Road
Honolulu, Hawaii 96815
808-949-4321



SAFE ACCESS OAHU PROGRAM

Proof of Vaccination or Negative Test within previous 48 hours.

Effective September 13, 2021, the Mayor of Honolulu has instituted a Safe Access Oahu program, which requires that all restaurant, bar and indoor recreation patrons show proof of full COVID-19 vaccination or a negative test result taken within the previous 48 hours in order to enter. This mandate also includes the Waikiki Starlight Luau, Kalia & Alii Tower Fitness Centers, 4DFX Movies, and Atlantis Submarine Rides.

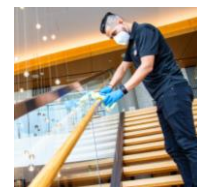
We will be issuing voluntary proof of Vaccination Wristbands at check-in for use at all of our resort restaurants, bars luau, fitness center and indoor recreation sites.



FACE MASKS

Please note that we require all guests and team members to wear a face mask in all of our lobby areas, elevators and indoor public areas.

To prepare for your arrival, we have taken extra safety precautions, including industry-leading hygiene practices. Please visit www.Hilton.com/cleanstay.



Dining On-Site - Breakfast

See Map Locations on Page 6

BALI Oceanfront : Breakfast Daily

Located Oceanfront in the Rainbow Tower mezzanine. Breakfast Saturday – Wednesday (closed Thursday & Friday) 7am-11:30am, [Click Here for online reservations](#) or go to www.BaliWaikiki.com or call ext 43 from your guest room or dial 808-941-2254

TROPICS BAR & GRILL - Beachfront

7:00am – 10:00pm

Breakfast, Lunch, Dinner and Beverages

IN-ROOM DELIVERY - Wiki Wiki To You

Dial extension 75253 from your room. [See Menu](#) in our Guest Directory
Breakfast (Delivery) 7:30am-10:30am, Dinner (Delivery) 5:45pm-7:45pm

WIKI WIKI MARKET

Take-Out / Grab-n-Go- 7:00am- 8:00 pm, Located in the Ali'i Tower ground floor

STARBUCKS – 2 Locations

Ali'i Plaza 5:30am – 5:30pm, Located near the Ali'i Tower

Kalia Tower 6:00am – 11:00am,

ABC Stores / Island Deli

Grab-n-Go Packaged Meals : Located at two locations:

Rainbow Bazaar 6:30am-11:30pm

Tapa Tower Concourse 6:30am – 11:00pm,

Hawaiian Coffee, bottled juices, fresh fruit bowls, pastries, breakfast sandwiches, groceries and more.

Blue Water Shrimp & Seafood

Breakfast Dine-in or Take-Out made to order– 7:30am- 10am, Located in the Rainbow Bazaar, Hawaii fusion restaurant serving up Aloha every morning for breakfast. Call 808-955-5400

CJ's New York Style Deli

Dine-in or Take-Out made to order - 7:00am- 9:30pm

Located in the Rainbow Bazaar. Waikiki's largest breakfast selection served all day.

Dial ext 74068 from your guest room or 808-942-0027

www.cjsdeliwaikiki.com

Fresco Italian Restaurant

Dine-in or Take-Out made to order – Breakfast: 7:00-11:00am (Mon-Fri) and 7:00am-12pm (Sat-Sun); Dinner: Daily 4:00pm-9:30pm, Located in the Rainbow Bazaar 2nd Floor

Italian cuisine with an island flair. Dial ext 74077 or 808 941-8868

www.frescohawaii.com

Lappert's Hawaii 6am – 9pm, Located in the Rainbow Bazaar, Fresh baked goods and delicious coffees. Dial ext 74152 or 808-943-0256

[Lappert's Hawaii Menu](#)



Dining On-Site - Lunch, Snacks, Dinner and Bars

See Map Locations on Page 6

BALI OCEANFRONT

Located in the Rainbow Tower mezzanine,

Open: Thursday – Saturday

Dinner 5pm-9pm; Dinner

[Click Here for online reservations](#)

or go to www.BaliWaikiki.com

or call ext 43 from your guest room or dial 808-941-2254



Delicious Views. Breathtaking Cuisine.

TROPICS BAR & GRILL - Beachfront

7:00am – 10:00pm

Breakfast, Lunch, Dinner and Beverages



TAPA BAR

5pm-11pm, Located at the base of the Tapa Tower

HAU TREE BAR

Bar open from 9am-7pm

Dine-in made to order – 10:30am-5pm

IN-ROOM DELIVERY - Wiki Wiki To You

Dial extension 75253 to order. [See Menu](#) in our Guest Directory

Breakfast (Delivery) 7:30am-10:30am, Dinner (Delivery) 5:45pm-7:45pm



WIKI WIKI MARKET

Take-Out / Grab-n-Go- 7:00am- 8:00 pm, Located in the Ali'i Tower ground floor

STARBUCKS -

Ali'i Plaza 5:30am – 5:30pm, Located near the Ali'i Tower

Kalia Tower 6:00am – 11:00am

MIX BAR - Ali'i Tower (for Ali'i Tower guests only)

Lunch, Snacks, Beverages 11:00am- 5:00 pm, Located on the Ali'i Tower pool terrace

ABC Stores / Island Deli

Grab-n-Go Packaged Meals : Located at two locations:

Rainbow Bazaar 6:30am-11:30pm

Tapa Tower Concourse 6:30am – 11:00pm,

Accents at Grand Waikikian

Grab-n-Go Packaged Meals: Sun. – Thurs. 11am – 7pm

Located in the Grand Waikikian Tower

Sandwiches, salads, groceries, beer, wine and spirits.. 808-947-8405

Aloha Bowls & Tea

Take-Out made to order– 11am- 6pm

Located next to the Tapa Pool

Poke Bowls, Acai Bowls, Boba Teas and Smoothies. All drinks and bowls are made-to-order to ensure that our guests enjoy the freshest local favorites possible.



Dining On-Site - Lunch, Snacks, Dinner and Bars

See Map Locations on Page 6

AOKI Teppanyaki

Dinner- Dine in only - 4:30pm – 10pm, Rainbow Bazaar

Reservations Recommended for Dine-in 808-955-5955

Masterful Teppanyaki Chefs prepare steak and seafood delicacies on a tableside grill with skillful dexterity. Ala Carte menu also available. Beer, wine and specialty beverages. Dial ext 74072 or call 808-955-5955, Menu at

www.aokigrill.com/waikiki/

Blue Water Shrimp & Seafood

Dine-in or Take-Out made to order– 7:30am- 10pm

Located in the Rainbow Bazaar Call 808-955-5400

CJ's New York Style Deli

Dine-in or Take-Out made to order - 7am- 9:30pm

Located in the Rainbow Bazaar

Specializing in thick New York-style deli sandwiches, tasty pastas, half-pound burgers, soups and salads. Beer, wine and specialty beverages. Dial ext 74068 from your guest room or 808-942-0027 www.cjsdeliwaikiki.com

DQ/Orange Julius 12 noon – 6:30pm

Located on the beach in front of the Rainbow Tower. Hot Dogs, Pretzels, Blizzards, Smoothies, Shakes and soft serve cones.

Fresco Italian Restaurant

Dine-in or Take-Out made to order – Breakfast: Daily 7:00-11:00am (Mon-Fri) and 7:00am-12pm (Sat-Sun); Dinner: Daily 4:00pm-9:30pm, Located in the Rainbow Bazaar 2nd Floor, Italian cuisine with an island flair.

Dial ext 74077 or 808 941-8868, www.frescohawaii.com

Hatsuhana Restaurant & Sushi Bar

Dine-in or Take-Out made to order – 10:30am-9:30pm

Happy Hour: 2:30 – 5:00pm, Located in the Rainbow Bazaar

Japanese cuisine, sushi menu. Beer, wine and specialty beverages.

808 946-8287

www.hatsuhanausa.com

Lappert's Hawaii

6am – 9pm

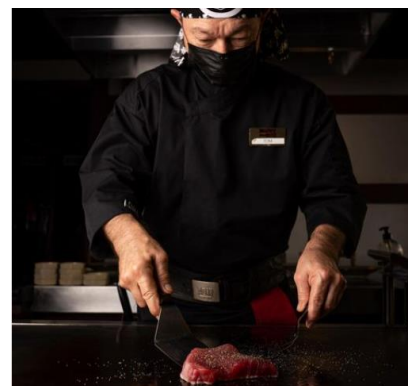
Located in the Rainbow Bazaar, Gourmet Hawaiian Ice Cream, Shakes, Smoothies, Fresh baked goods and delicious island coffee. Dial ext 74152 or 808-943-0256, [Lappert's Hawaii Menu](#)

Round Table Pizza

Dine-in or Take-Out made to order 11am – 10pm

Located in the Rainbow Bazaar

Voted Waikiki's #1 traditional and specialty pizzas, with dough rolled fresh daily! Also enjoy a variety of salads, baked sandwiches, and tasty appetizers. Beer and wine. 808-955-0137 www.roundtablepizzawaikiki.com



HILTON HAWAIIAN VILLAGE PRESENTS

Waikiki Starlight Luau

The drama and grace of Polynesia unfolds on our beautiful Great Lawn with live music, drums, the captivating dances of the South Pacific and the fiery drama of the amazing fire knife dancers.

Tuesday, Thursday, Friday at the Great Lawn. 5:30pm-8pm

Live Music – Hawaii's best musicians will showcase native Hawaiian music and Polynesian chants

Energetic and Beautiful Dances – Our beautiful dancers will mesmerize you with dances from Hawaii, Polynesia and the Pacific.

Waikiki's Most Dramatic Fire Knife Dance – Enjoy the skilled performance of our 4 acrobatic Fire Knife Dancers

Resort-quality dining – Known for having the Best Luau cuisine on the island, you will love our exotic flavors and locally sourced island ingredients



Located on the Great Lawn

Golden Circle Seating

Available for **\$170 per adult** (12 years and up) and **\$110 per child** (ages 4-11)(Children 3 and under are free)

- Lei Greeting
- Mai Tai Punch and one beverage
- Hawaiian and other Island delicacies

[Book Now](#)

Premier Seating

Book our upgraded tickets for just **\$210 per adult** (12 years and up) and **\$150 per child** (ages 4-11)(Children 3 and under are free) and enjoy the following exclusive benefits:

- Lei Greeting
- Premier seating, closest to the stage
- Mai Tai Punch and two beverages
- Hawaiian and other Island delicacies
- Be first to enjoy the feast!

[Book Now](#)

Prices do not include tax and gratuity. Complimentary validated self-parking is available at the resort.



[Reserve Tickets Online](#)

Note: Information above may change without notice.



*ADA Access for Fresco
 Located at the Rainbow Bazaar, Fresco is only accessible by stairs.
 For dining options please contact Fresco at 808-941-8868.

Our Facilities

ADA EXPRESS CART

Convenient transportation is available via our HHV Express Cart. Guests can simply dial 41 and one of our friendly Bell Service Clerks will arrange pick-up from their tower and transport to their destination within the resort.

ADA ACCESS FOR FRESCO'S

Fresco Italian Restaurant is only accessible by stairs. Patrons unable to negotiate steps will be served on tables situated on the 1st level of the Rainbow Bazaar near the stairs leading up to the restaurant.

AIRPORT TAXI OR SHUTTLE

Call Charley's Taxi: 808-233-3333 You can also [book online here](#).

Call SpeediShuttle: 808-839-6248 You can also [book online here](#).

ATM MACHINE Located in the Main Lobby, Diamond Head Tower and Tapa Tower Concourse (near ABC Store in the Tapa Tower) and Rainbow Bazaar at the base of the escalators. See Map on page 5.

BUSINESS CENTER Xerox Business Center, Located in the Diamond Head Tower. Dial 74160.

Hours of Operation

Monday: 6:30am-5:00pm,

Tuesday-Saturday: 8:00am-5:00pm, Sunday: Closed

Closed for Lunch: Monday-Saturday, 12 noon-1:00pm

Self-service available: 24-Hours -Access with your Hilton Hawaiian Village room key. Credit card required for payment. (Limited to internet, copying, printing and faxing.)



CAR RENTAL

Enterprise Car Rental desk offers cars conveniently located right here at Hilton Hawaiian Village. The desk is located in the Rainbow Bazaar. For reservations call [\(808\) 949-4321](#) Ext. 64, [\(800\) 468-3334](#), or [book online](#).

CONCIERGE DESKS

Located in the Main Lobby from 7:30am-8:00pm, Tapa Tower Desk 7:30a,-5pm, Rainbow Tower 8am-3p, Activities Desk 8am-6pm, Daily. 808-846-6199

DOCTORS ON CALL STRAUB DOCTORS ON CALL provides immediate care for a variety of illnesses.

Located in the Rainbow Bazaar next to Fresco's. Open Mon.-Fri., 8:00am – 4:30pm. Call 808-973-5250 or After Hours 808-971-6000

The ADA access to the DOC office is from and thru the 2nd floor of parking structure (take the Mid-Pacific conference/parking elevators to 2nd floor).

DRY CLEANING Laundry bags and ticket forms are available at the Bell Desk in the Main Lobby between 7 am and 11 pm, daily. Same-day service available only from Mon – Sat. Laundry is returned between 5 – 6pm. No laundry service on Sun. Dial ext 41

DVD NOW CARD Your DVD Now Card can be used to access movies and games from the DVD Now machines located in the lobby of your tower. The DVD Now Card is your pass to many of our cultural and exercise activities. Carry it with you.

FITNESS CENTER Open Daily. 6:00am-6:00pm, Located on the 4th floor of the Kalia Tower. Face masks are required in the fitness center at all times. Capacity in limited – sign up with the Fitness Center attendant.



HAWAIIAN CULTURAL ACTIVITIES

Experience the essence of Hawaii with cultural classes that include hula lessons and lei making. Various locations. See class schedule on page 9. First come to secure a spot.

Our Facilities

LUGGAGE STORAGE – OVERNIGHT

Available at Xerox Business Center, Mon-Sat, 8am-5pm located at the Diamond Head Tower. Dial 74160 or call 808-949-0656 or email: hxbc@Xerox.com



MANDARA SPA & SALON Open Daily. 10:00am – 6:00pm. Check-in on the 4th floor of Kalia Tower.

Click here to view our [MANDARA SPA FEBRUARY SPECIAL](#)

Mandara Spa at the Hilton Hawaiian Village creates an experience that is truly unforgettable. As the largest spa in Waikiki, Mandara Spa offers relaxing massages, rejuvenating facials, refreshing body scrubs and wraps, and an innovative full service salon. Incorporating indigenous Hawaiian ingredients.

Dial 74370 or call 808-945-7721 or email us at Hawaii@mandaraspa.com

[MANDARA SPA MENU](#)

Website: [Mandara Spa at Hilton Hawaiian Village](#)



LAGOON WATERCRAFT

Open Daily from 9am-6pm. All rentals must be returned by 5:30pm

- Surfboard rentals
- Two-person Kayaks: 1-hour rentals
- Aqua Bikes : 1-hour rentals

For Rentals visit the Waikiki Beach Activities Lagoon stand.

OUTDOOR FITNESS CLASSES Yoga, Morning Aerobics and Tai Chi classes are among our popular early riser fitness classes at the resort. See class schedule on page 9. First come to secure a spot.



PARKING

Daily Self-Parking Charge for registered hotel guests: \$55/night *, motorcycle/moped: \$10/day* parking.) Oversized Vehicles: Vehicles over 6' 6" do not fit in our parking garage and will incur a cost of \$75/night* Valet Parking: \$65/night* Lost Ticket: \$100.00* *Prices exclude tax.

POOLS & POOL RULES

Super Pool 8:30am – 9pm

Pool towel service available at 9am – 6pm

Tapa Pool 9am – 9pm (Pool towels available 10am-6pm)

Paradise Pool 9am – 6pm, Outdoor Slide: 11am-2pm
Lava Tube Slide: 2pm-5pm

Kalia Pool (Adult Pool –Age 18+) 9am-5pm

Ali'i Tower Pool Available only for guests of Ali'i Tower, Open Daily from 8am – 6pm

POOL & BEACH TOWELS

You will receive Pool Towel Cards at check-in.

Present your towel cards to the:

Super Pool Towel Service 9am – 6pm

Tapa Pool Towel Stand 10am-6pm

Paradise Pool Towel Stand 9am – 6pm

Please return soiled pool towels by 5:30pm or return them the next day. We will take the pool towel charge of \$20 per towel off your guest room folio.

POSTAL SERVICES in the Xerox Business Center, Located in the Diamond Head Tower. Dial 74160.

Hours of Operation

Monday: 6:30am-5:00pm,

Tuesday-Saturday: 8:00am-5:00pm, **Sunday:** Closed

Closed for Lunch: Monday-Saturday, 12 noon-1:00pm

Our Facilities

TRANSPORTATION

CHARLEY'S VIP AIRPORT SERVICE & FLAT RATE SUVS VIP Full-Service Airport Package

Charley's Taxi offers a VIP Full Service Airport package to Hilton Hawaiian Village with a variety of vehicle options. Your driver will meet your party with a luggage cart and a Paging Sign displaying your party's name. You'll also receive a Departure Reminder Card noting your return pick-up time. Leis are available for an extra charge.

Due to high demand we ask that you make your reservation at least 48 hours in advance.

Vehicle	To Hotel only	Round Trip	Capacity (w/bags)	Capacity (no bags)
Mini Van	\$110	\$190	4	6
SUV	\$135	\$255	6	6
Sprinter Van	\$180	\$335	8	13
Navigator SUV Limo	\$180	\$335	7	10

To reserve a Charley's Taxi VIP Full Service Airport package, please call [808-947-0077](tel:808-947-0077) or Ext 75255. You can also [book online here](#).

Click here to see our [enhanced cleaning protocols](#).

Flat Rate SUVs

Charley's also offers SUV style without VIP services. With our flat rate s you can rest assured that no matter the traffic, the rate won't change.

- 6 passenger SUV: \$100
- 4 passenger SUV: \$75

If you are interested and not in a big hurry, your driver can show you some of Honolulu's historic sites on the way to Waikiki.

To reserve your ride, please call [808-947-0077](tel:808-947-0077) or Ext 75255. You can also [book online here](#).

SPEEDISHUTTLE AIRPORT TRANSPORTATION

SpeediShuttle is the only shuttle that can drop off and pick up guests in the Main Lobby at the resort. All other "shuttles" including the Airport Shuttle will drop you off at the Tapa Bus Terminal (about a 3 minute walk to the Main Lobby).

SpeediShuttle and all taxi cabs are able to drop you off at the Main Lobby.

SpeediShuttle's Mercedes-Benz shuttles are equipped with GPS technology, which allows the staff to manage the service on a timely basis and also has kept them in the highest ranking for safety in the industry

- Shared Ride
- Exclusive Shuttle
- Lei Greeting is also available.

[Book Now](#) or call 877-242-5777

and ask for SpeediShuttle or email hhv@speedishuttle.com. From the resort call Ext. 70773 or stop by the SpeediShuttle desk in the Main Lobby.



WEDDING CHAPEL

The Akala Chapel. Located next to the Village Green. Offering a variety of arrangements from a vow renewal gazebo wedding to an intimate chapel wedding. Please call 808-478-4052 or email at hnldestination@watabe.com

WEDDING ON THE BEACH OR SURPRISE MARRIAGE PROPOSAL

There is no better way to say "I love you" than a surprise marriage proposal or wedding on the beach at the beautiful Hilton Hawaiian Village. Please call or text 808-829-1423 or email at thebesthawaiiwedding@gmail.com

Cultural & Fitness Classes

- Meet at the locations below 10 minutes prior to class time. First come to secure a spot.
- Parents must accompany children during all activities.
- Please bring your DVD NOW card for entrance.
- Class sizes may be limited due to Covid19 restrictions by the City and County of Honolulu.
- Face Masks are required for indoor activities
- Information below may change without notice.



HOURS	SUNDAY	MONDAY	TUESDAY	WEDNESDAY	THURSDAY	FRIDAY	SATURDAY
6:30 AM	Aerobics Village Green	Yoga Village Green	Aerobics Village Green	Yoga Village Green	Yoga Village Green	Tai Chi Village Green	Yoga Village Green
9:00 AM					Lei Making Tapa Bar		Lei Making Tapa Bar
10:00 AM			Lei Making Tapa Bar	Hula Lessons Village Green	Lei Making Tapa Bar	Keiki Games * Village Green	Lei Making Tapa Bar
11:00 AM			Lei Making Tapa Bar	Intro to Surf Lessons Meet at Surf Tent fronting Rainbow Tower			
11:30 AM	Fish Feeding Meet outside Alii Tower	Hula Lessons Village Green			Hula Lessons Village Green		
1:00 PM	Lei Making Tapa Bar		Hula Lessons Village Green			Lei Making Tapa Bar	
2:30 PM	Lei Making Tapa Bar				Fish Feeding Meet outside Alii Tower	Lei Making Tapa Bar	
SUNDOWN				Movie Night* See Locations Below			

MOVIES: Feb 2: The Lego Movie the Second Part(PG) at Village Green, **Feb 9:** Moana (PG) at Village Green, **Feb 16:** Jumanji Welcome to the Jungle(PG-13) at Village Green, **Feb 23:** Inside Out (PG) at the Village Green



KEIKI GAMES*

(Children's Games)

Bring your children with you to enjoy traditional Hawaiian games of skill,

Moa Pahe'e and Ulu Maika. Two fun Hawaiian games that are similar to bowling.

Parents must accompany children during all activities.



POOLS & Pool Rules

POOLS AND POOL HOURS

Super Pool 8:30am – 9pm (Pool towels available 9am-6pm)

Tapa Pool 9am – 9pm (Pool towels available 10am-6pm)

Paradise Pool 9am – 6pm, Outdoor Slide: 11am-2pm
Lava Tube Slide: 2pm-5pm

Kalia Pool (Adult Pool –Age 18+) 9am-5pm

Ali'i Tower Pool Available only for guests of Ali'i Tower,
Open Daily from 8am – 6pm

CABANA RENTALS Rent a Cabana at our Tapa Pool. 12x12 covered Cabana seats up to four guests (4) comfortably and includes 2 relaxing chaise lounges, 2 chairs, 2 tables, 2 towels and 2 bottles of water. Tapa Cabana rentals are available from 10am to 6pm. Cabana capacity is limited to 4 guests maximum.

Go to <https://hiltonhawaiianvillage.ipoolside.com/>

TOWELS

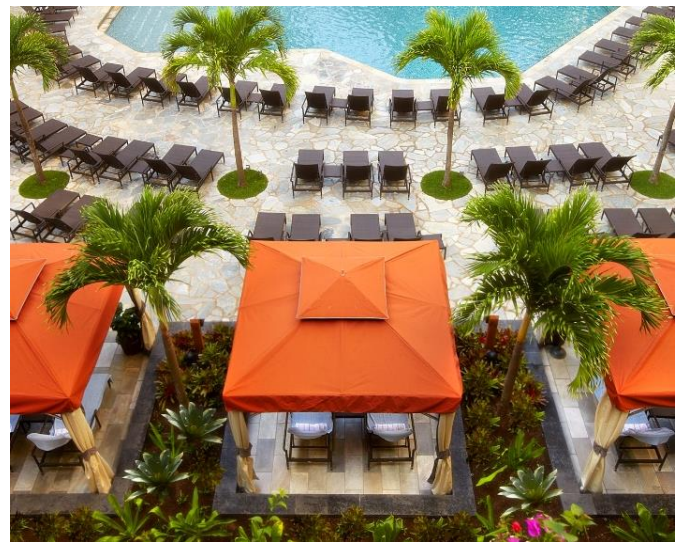
You will receive Pool Towel Cards at check-in. Present your towel cards to the

Super Pool Towel Stand Open Daily from 9am – 6pm.

Tapa Pool Towel Stand 10am-6pm

Paradise Pool Towel Stand 9am-6pm

Please return soiled pool towels by 5:30pm or return them the next day. We will take the pool towel charge of \$20 per towel off your guest room folio.



POOL RULES & ETIQUETTE



No Reserving Pool Chairs, items left unattended may be removed.

- Room Key required. Registered Hotel Guests Only.
- No outside food & beverage allowed.
- No Coolers, Glass Bottles or Cups.
- Alcoholic Beverages not allowed on Beach. Fines of \$1000 issued by the State of Hawaii.
- Swim Diapers must be worn by babies and toddlers in the pool.
- Minors (12 & under) require adult supervision.
- No loud music, running or jumping into pools.
- Pets not allowed at pools.
- No rafts, balls, discs, snorkels, or large flotation devices greater than 34"
- No Smoking or Vaping

Ocean Fun at the Resort

ATLANTIS SUBMARINES

Explore the depths of Hawaii's ocean waters 100 feet below the surface and "swim" amidst schools of beautiful fish in the world's most technologically advanced passenger submarine.

Atlantis has been sharing the magnificence of Hawaii's undersea world since 1988 using the environmentally safe submarines that are battery powered, emit no pollutants, and quietly move through the water, disturbing no one. It's the ultimate in sustainable tourism.

Atlantis Submarine Dives:

For dates and times, please click the link below.

Check in 30 minutes prior to dive time at the Hilton Hawaiian Village Atlantis Submarine Ticket Desk near beachfront Super Pool.

Reservations available at www.atlantisadventures.com or call 808-973-9811



CATAMARAN CRUISES

Spirit of Aloha Catamaran

Enjoy a premium sailing experience aboard the Spirit of Aloha, the premier catamaran yacht in all of Waikiki. Daily itineraries include Turtle Snorkel Sails, Adventure Cruises, and Sunset Cocktails. Fun, enjoyable, outdoor fresh air experiences accompanied by expert lifeguard-certified crew. For reservations call Tours & Activities Desk at ext 29.

WAIKIKI BEACH ACTIVITIES

Surf School

Learn to surf where legendary waterman, Duke Kahanamoku and Hawaiian Royalty did at Duke Kahanamoku Beach. Two hour surf school sessions offered daily at 9:00am, 11:00am, 1:00pm and 3:00pm

Call ext 74292 or 888-904-4088 from 9:00am – 5:00pm or visit any Waikiki Beach Activities Desk or Hilton Concierge Desk



Ocean Fun at the Resort

LAGOON WATERCRAFT

Open Daily from 9am-6pm. All rentals must be returned by 5:30pm

- Surfboard rentals
- Two-person Kayaks: 1-hour rentals
- Aqua Bikes : 1-hour rentals

For Rentals visit the Waikiki Beach Activities Lagoon stand.

STAND-UP PADDLEBOARD YOGA (SUP YOGA)

Experience Hawaii in a unique way by trying yoga on a stand-up paddleboard for a fun and refreshing workout while enjoying the beauty of Waikiki. No matter what level you are – beginner, intermediate or advanced, join us to learn how to stand up paddleboard and challenge yourself with this new experience. We will guide you safely through basic yoga poses and fundamentals while having some fun in the sun.

Sign up the day prior at the Waikiki Beach Activities Desk at the Lagoon or schedule online below:

Schedule: SUP yoga classes are offered every day except Sunday (8:30am-10:00am, check in by 8:15am, RSVP 24 hours)

Cost: \$65.00 per person*

[Click here to make a reservation.](#)



Tours And Activities

Tours & Activities Desk is open daily 9 am – 6 pm.
Concierge Desks in the Main Lobby 7:30am -6pm

From helicopter rides and golfing trips to ocean cruises and watersports, a wide choice of options are available to help you make the most of your vacation. For more information, call us at 808-846-6368

[Click here](#) to visit our website, to see all of our tours and activities.

Here are a few examples:

PEARL HARBOR TOUR

A Pearl Harbor tour is a must when on Oahu. Recognized as Hawaii's most popular visitor attraction, this moving and thought-provoking site holds not only a place in the history of the islands, but in the hearts, minds and personal histories of so many from beyond Hawaii. All tours led by a certified E Noa guide with a personal love and deep knowledge of Oahu.

BEST OF KUALOA EXPERIENCE

The ultimate Kualoa experience! Three 90-minute immersive Hawaiian experience tours, which include: our ever-popular Hollywood Movie Sites Tour, our Jurassic Jungle Expedition, and our Taste of Kualoa Farm Tour.

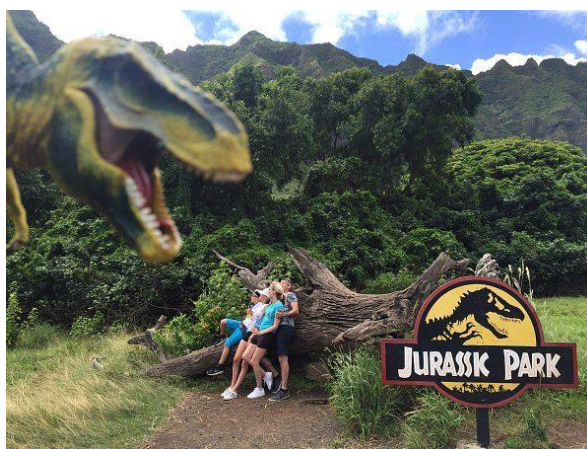
ATV VEHICLE ADVENTURE – 2 to 6 people per vehicle

Minimum age is 5 years. Minimum driver age is 21. Note: There are 6 (six) seat belts per vehicle and you can have anywhere from 2-6 guests per vehicle depending on ages and guest size. [Learn More](#).

ZIPLINE CANOPY TOUR

8 SIDE-BY-SIDE ZIPLINE RUNS

Our long, high, and extra-quiet Oahu zip lines are designed so you can see the North Shore's famous beaches, farms, and lush mountains with the person of your choice right next to you. Lines range from 500 – 2400 feet.



Hawaii CinemAttractions

Hawaii's Premier Fully-Immersive Motion Effects Cinema and VR Escape Room Experience

Daily 2pm – 9pm at the Cinema in the Tapa Tower

Hilton Hawaiian Village is now home to Hawaii's premier fully-immersive cinematic 4DFX attraction and video arcade venue. Hawaii CinemAttractions provides a state-of-the-art motion and sensory effects cinema experience, taking guests on an exciting ride with original films **Soaring Over Hawaii 4DFX** and **Adventure Quest Hawaii 4DFX**, available only at Hawaii CinemAttractions.

Visitors and local residents of all ages can experience exciting and new adventures without ever having to leave their seats with special effects through motion-enabled chairs, vibration, water, wind, scents and much more that enhances the unforgettable iconic Hawaii visuals on-screen. Hawaii CinemAttractions cinema is equipped with 32 seats, including two with ADA access.

Located in the Tapa Tower at Hilton Hawaiian Village, Hawaii CinemAttractions is also excited to introduce its innovative **VR Escape Room** by Chambers Escape Games and classic **Retro Game Room/ Arcade** entertainment, providing an additional source of all-ages entertainment, all in a convenient safe, sanitized, socially distanced environment.

Bookings and Info

www.4dfxhawaii.com

Phone: 808 892 1029



Guest Smoking Area



Smoke Free Hawai'i Law Hilton Hawaiian Village® Smoking Policy

The law prohibits smoking, including e-cigarettes, in all "enclosed or partially enclosed" areas open to the public that include, but not limited to restrooms, lobbies, reception areas, hallways, bars, hotel rooms, balconies, restaurants, retail service establishments, and retail stores. A slight exemption is being made for hotels. The exemption clause says up to 20% of the rooms rented to guests in a hotel or motel may be designated as smoking rooms.

Guestrooms: As of November 16, 2006 smoking is prohibited in all Hilton Hawaiian Village guest rooms with the exception of some guest rooms on the 23-25 floors of Kalia Tower, where smoking on the balconies in those specific rooms will be permitted.

Beach: As of April 2013, smoking is prohibited on certain beaches and parks including Duke Kahanamoku Beach in front of Hilton Hawaiian Village.

Smoking for guests, including e-cigarettes, is prohibited everywhere on property at Hilton Hawaiian Village, except on the red areas designated on the map on the flip side of this page.

Guest Smoking Area: (See map on reverse)

- Paoa Passage

ハワイ州禁煙法 ならびに ヒルトン・ハワイアン・ビレッジの喫煙ルールについて

ハワイ州では、2006年11月に施行された禁煙法により、定められた公共の場所（屋内および準屋外を含む）での喫煙が、電子タバコも含めて禁止されています。これらの禁煙区域には、トイレ、ロビー、フロント付近、廊下、ホテル客室、バルコニー、レストラン、バー、店舗などが含まれます。但し、ホテルなどの宿泊施設には、全客室数の最大20%までを喫煙室に指定することが許可されています。

客室

ヒルトン・ハワイアン・ビレッジの客室は**全室禁煙**です。但し、カリヤ・タワーの23～25階にある一部の客室に限り、バルコニーでの喫煙が許されています。

ビーチ

2013年4月より、ヒルトン・ハワイアン・ビレッジ前のデューク・カハナモク・ビーチを含む一部のビーチおよび公園での喫煙が禁止されています。

ヒルトン・ハワイアン・ビレッジの敷地内は、裏面マップに赤で表示された区域を除く全域で禁煙（電子タバコも含む）となっています。

喫煙ができる場所（裏面のマップをご参照ください）

- パオア・ロードに抜ける通路

Telephone Dialing Information And Rates

TELEPHONE INFORMATION & RATES

- **Room to Room Call:** No Charge
- **911** No Charge
- **Local:** \$1.50 +0.10 per minute after 60 minutes.
Dial 9 + Number
- **800/888/877 Toll Free:** No charge under 60 minutes /\$0.10 per minute after 60 minutes
Dial 9 + 1 + 8 X X
- **Long Distance Domestic:** AT&T Operator Assisted Rate less 50% of surcharge
Dial 9 + 1 + Area Code + Number
- **International:** AT&T Operator Assisted Rate
Dial 9 + 011 + Country Code + City Code + Number
- **Directory Assistance:**
Local: \$1.00 per call, Long Distance: \$2.00 per call
Dial 9 + 1 + 411
- **Calling Card/Credit Card/ Collect/Third Party Calls**
No charge under 60 minutes / \$0.10 per minute after 60 minutes
Dial 9 + 0 + Area Code + Number
- **Other Common Carriers:** No charge under 60 minutes / \$0.10 per minute after 60 minutes
Dial 9 + 0 + Number

Applicable taxes will be added to all rates.

Long distance or international calls will be billed to your room only if the called party answers.

You may obtain free rate information any time by dialing 9 + 00 and ask the Operator for AT&T's Operator Assisted Rate. You have the right to reach other long distance carriers from your guestroom phone and you may do so by dialing the access codes provided by that carrier.

Direct complaints to:
Federal Communications Commission
FCC Enforcement Division
CCB Room 6202
Washington, DC 20554

Your Safety

EMERGENCY Dial **911** or **21**, or text us at 808-425-9010 if you are not in your guest room.

DOCTOR

STRAUB DOCTORS ON CALL provides immediate care for a variety of illnesses. Located in the Rainbow Bazaar next to Fresco's. Open Mon.-Fri., 8:00am – 4:30pm. Call 808-973-5250 or After Hours 808-971-6000

The ADA access to the DOC office is from and thru the 2nd floor of parking structure (take the Mid-Pacific conference/parking elevators to 2nd floor).

FIRE SAFETY

Take a few moments to familiarize yourself with the closest emergency exit. A detailed emergency exit map is located on the inside of your room door. In the event of a fire, do not use the elevators.

PRIVACY

Need some peace and quiet. Please hang your Do Not Disturb sign on your guest room doorknob. Be aware that Housekeeping will not service a room that has a Do Not Disturb sign displayed.

We understand your need for privacy. The hotel reserves the right to visually inspect all guest rooms every 24 hours to ensure the well-being of our guests and confirm the condition of the room.

SAFE DEPOSIT BOXES

Safe deposit boxes are available at the Front desk at no charge. You may prefer the convenience of our complimentary in-room safe for protection of your valuables. The hotel is not responsible for valuables or cash missing from guest rooms.

SPECIAL CONSIDERATIONS

Americans with Disabilities Act

For questions or complaints regarding services, amenities, accommodations, or facilities provide to person with disabilities, please contact the hotel's ADA contact person, the hotel manager by dialing 0.

SUNBURN

We strongly advise the use of sunscreen to prevent sunburn.

TRESPASS

Individuals who willfully damage resort property, create an unsafe condition, or exhibit threatening behavior or acts of violence, will be subject to a Trespass Warning in the second degree for a period of no less than one year or as designated by hotel management. Secondary violation of this warning is punishable by imprisonment for up to thirty days per the Criminal Trespass Act under the Hawaii Revised Statutes Section 708-814.

WEATHER RELATED EMERGENCIES: FLOOD, HURRICANE, TSUNAMI

Use extreme caution when dealing with weather related emergencies. Follow the directions of our hotel management and security or law enforcement. In the event of a weather-related emergency, sirens will sound. If asked to move to a safe location, please proceed quickly and calmly, sign-in and wait for further details. Visit www.HiltonWaikoloaVillage.com/advisories

ZERO TOLERANCE

We are committed to maintaining a safe and secure workplace that is free from discrimination, harassment and any acts of threats of violence. In keeping with this, Hilton has adopted a policy that provides "zero tolerance" for actual or threatened violence against guests, employees, vendors, tenants or visitor by any individual on the hotel property.

Resort Charge Benefits

A Daily Resort Charge of \$50 (plus tax) is assessed per room, per night (valued at \$169.80). Please note that our Daily Resort Charge is assessed at check-in. This \$50 daily charge may not always be added to your final online transaction for reservations made through this website or through online travel websites or travel agencies.

The following items are included in our Daily Resort Charge:

- WiFi access in your room and in most public areas around the resort
- PlayStation® 3 access with unlimited movies and games (DVD Now card given to you at check-in can only be used in your specified tower. One movie/game can be removed at a time.)
- Local, toll-free, and credit card calls (No access fee)
- Hawaiian Village Cultural Activities (Please bring your DVD Now card to present to your instructor.)
- 10% off or 1 category upgrade on a 2-day or more rental from National Rental Car located in Rainbow Bazaar in Hilton Hawaiian Village* (Present your DVD Now Card.)
- 20% off the Adventure Sail on the Spirit of Aloha Catamaran** (Present your DVD Now Card at the Spirit of Aloha desk.)
- Outdoor Morning Exercise Classes. (Present your DVD Now Card to the instructor.)
- Movie Night each Wednesday (Present your DVD Now Card to the instructor.)
- 10% off at Waikiki Beach Activities† for beach chairs & umbrellas, kayaks, pedal boats, stand-up paddle boards and aqua cycles.*** (Present your DVD Now card at any Waikiki Beach Activities lagoon stand)
- 20% off the Elite Beach Package offered at Waikiki Beach Activities† for our Lagoon beach. VIP Package includes 1 umbrella, 2 cushioned chaise lounge chairs,.****

**Discount or upgrade only valid at Hilton Hawaiian Village location. Cannot be combined with any other promotion or offer.*

***Discount valid on Adventure Sail only not applicable to any other sails. Cannot be combined with any other promotion or offer.*

****10% discount at Waikiki Beach Activities is based upon availability, may not be combined with other offers and may be changed without notice. This discount offer excludes other rental and retail items, surfboard rentals, surfing lessons and SUP Yoga classes, catamaran rides and other activities.*

*****Cannot be combined with any other promotion or offer.*

†Independently owned and operated.