

# 20th CBRNE COMMAND

Chemical, biological, radiological, nuclear, explosives

Capabilities and Focus Areas

Ray Van Pelt

Deputy to the Commander - Support

# 20th CBRNE Command Overview

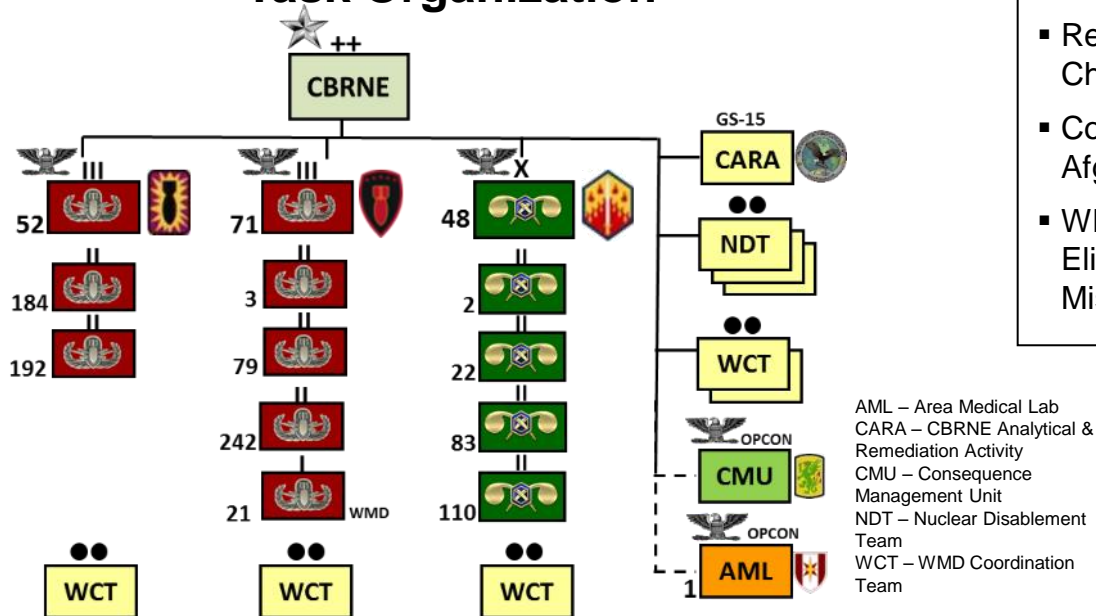
## Mission Statement

The U.S. Army 20th CBRNE Command exercises mission command over assigned United States Forces Command (FORSCOM) CBRN and Explosive Ordnance Disposal (EOD) forces; on order provides CBRN and EOD forces to Army and Joint, Inter-organizational, Multinational (JIM) Headquarters; on order deploys a Joint Task Force-Elimination (JTF-E) headquarters in support of Combatant Command requirements.

## Key Mission Areas

- Defense CBRN Response Force (DCRF) – Consequence Management
- National Technical Nuclear Forensics (NTNF) – Ground Collection Task Force
- EOD Emergency Response to DOD and in support of Civil Authorities (DSCA)
- Very Important Persons Protection Support Activity (VIPPSA)
- Recovered Chemical Warfare Material (RCWM) & Chemical/Biological Surety Escort
- Combat and Contingency Operations in Iraq/ Afghanistan & CBRNE related missions world-wide
- WMD Elimination – Serving as Joint Task Force for Elimination Headquarters, with the Capability to Mission Command Operational CBRNE Forces

## Task Organization







# 20th CBRNE Command Capabilities

Unique Department of Defense asset with specialized CBRN and EOD (CBRNE) capabilities

- Counter IED (CIED) Operations
- Render Safe and Disposal of all Explosive Ordnance (EO) and Improvised Explosive Devices (IED)
- Counter Weapons of Mass Destruction (CWMD) Operations
- CBRNE Reconnaissance and Surveillance Operations
- Decontamination of Personnel, Equipment
- CBRNE and WMD Consequence Management Operations
- Field Laboratory Analysis of Suspected CBRNE Materials, Agents, and Toxins



# 20<sup>th</sup> CBRNE Command Operational Approach

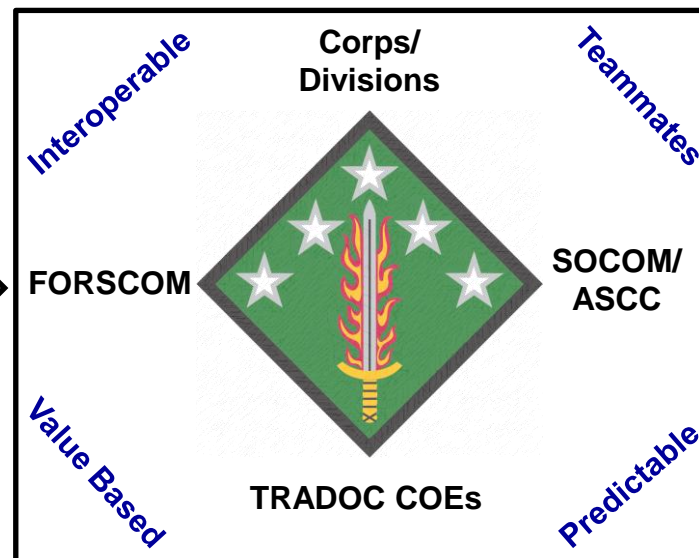


**Mission:** The 20<sup>th</sup> CBRNE Command exercises mission command over assigned FORSCOM CBRN and EOD forces; on order provides CBRN and EOD forces to Army and Joint, Interorganizational, Multinational (JIM) headquarters; on order deploys JTF-E headquarters in support of COCOM requirements.

## Enduring Priorities

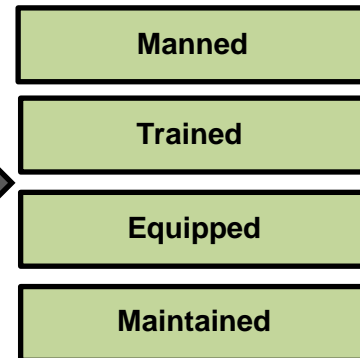


Focused thru



Results in

## Ready Now



**Vision:** Provide highly trained CBRNE forces that are 'Ready Now' to enable the Army to conduct Unified Land Operations and the Joint Forces to execute Unified Action





# Integration in Enhanced Capability Demonstration

In coordination with JPEO CBD, the 20th is demonstrating technologies in an Enhanced Capability Demonstration to inform CBRN/EOD initiatives and address modernization challenges.

## Materiel Focus Areas:

- **Protection.** Improve tailorable, flexible, integrated protective ensemble that enhances Warfighter performance (*Protective Ensembles, Physiological Monitors*)
- **Contamination Mitigation.** Improve personnel and materiel contamination mitigation capabilities, which enhance mission effectiveness and reduce logistical requirements (*Contamination Indication/Decon Assurance Spray*)
- **Characterization.** Improve capabilities to identify, characterize, assess and exploit CBRNE hazards (*CBRN Robot; R/N Detectors; Bio Detectors*)
- **Situational Awareness.** Improve communications systems to facilitate situational awareness and provide real-time reach back capability that supports timely force protection decisions (*Communications and Situational Awareness Tools*)

## Demonstrations Conducted:

- ✓ Baseline Effort at AWA 16.1 (Sep 15)
- ✓ Increment 1 at AWA 17.1 (Oct 16)
- ✓ Increment 2 at FTX at FSGA (Oct 17)

## Key Improvements:

- ✓ M53A1 Mask approved for fielding
- ✓ MRDS/MPU 5 pending approval for CBRN elements at HQDA





## Conclusion

- **The 20<sup>th</sup> CBRNE Command plays an important role in our Nation's efforts to counter CBRNE threats and hazards**
- **We have unique capabilities that have been tested and proven**
- **The command is focused on mission readiness in order to operate effectively in support of Army or Joint Forces**



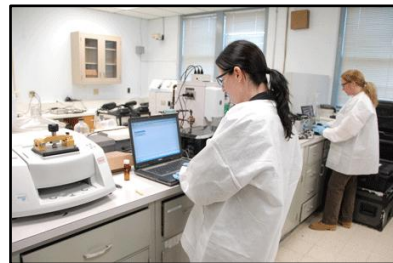




Questions?



Contact 20th CBRNE Command (410) 436-6200



*20th CBRNE Command*

