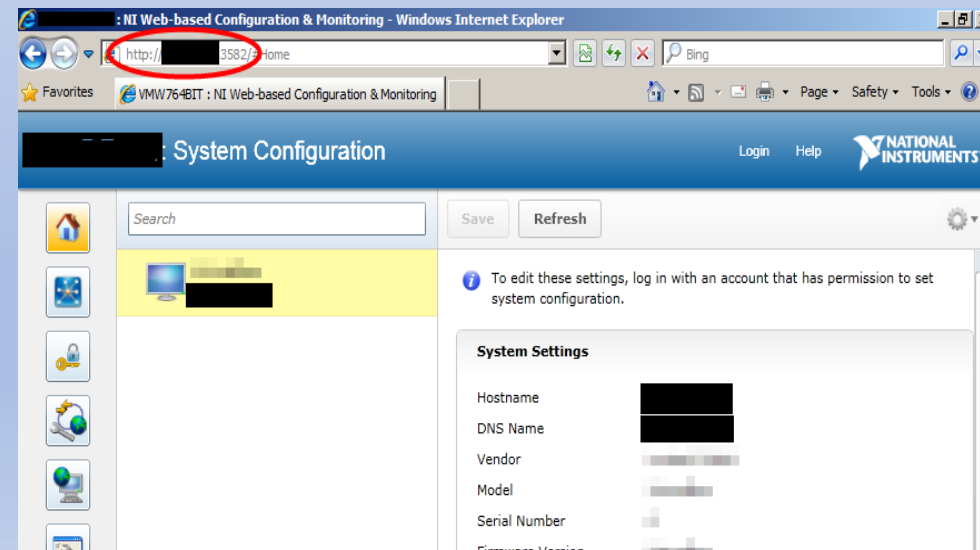


Cyber Security Vulnerability

LabVIEW Web-Based Configuration & Monitor

- NI System Web Server (default port 3582) –
 - The system web server is used to configure the web server(s), manage HTTPS certificates, and manage other web service permissions.
- NI Application Web Server (default port 8080) –
 - This web server hosts user created web services developed in LabVIEW
- Both ports remain open with critical computer information visible to anyone on the network.
- <http://localhost:3582>
- This has been around for about 10 years.
- Can Login as "admin" with a blank password
- Can create simulated devices, view even more information.
- By default this is enabled on all NI targets
- Any computer with the development suite installed.



Solutions

<p>LabVIEW already installed:</p> <ul style="list-style-type: none">• Note: this requires Admin privileges on the computer.• For a computer with LabVIEW installed<ul style="list-style-type: none">• Open the local services• Open the properties for following services<ul style="list-style-type: none">• NI Application Web Server• NI System Web Server• Disable, Close, and STOP each service• Reboot the system• Verify that the services are still disabled• Verify both local system cannot reach the ports	<p>New LabVIEW Installation</p> <ul style="list-style-type: none">• For new installations of LabVIEW 2017 and newer:• Install LabVIEW via command line using this command:<ul style="list-style-type: none">• <code>setup.exe /props NIAPPWEBSERVERNOINSTALL=1.</code>• Note: this will not correct this issue if you have earlier versions of LabVIEW already installed.
	<p>Alternative Solution</p> <ul style="list-style-type: none">• Disable incoming connections on these ports via firewall settings.• Might requires an IT policy change.