

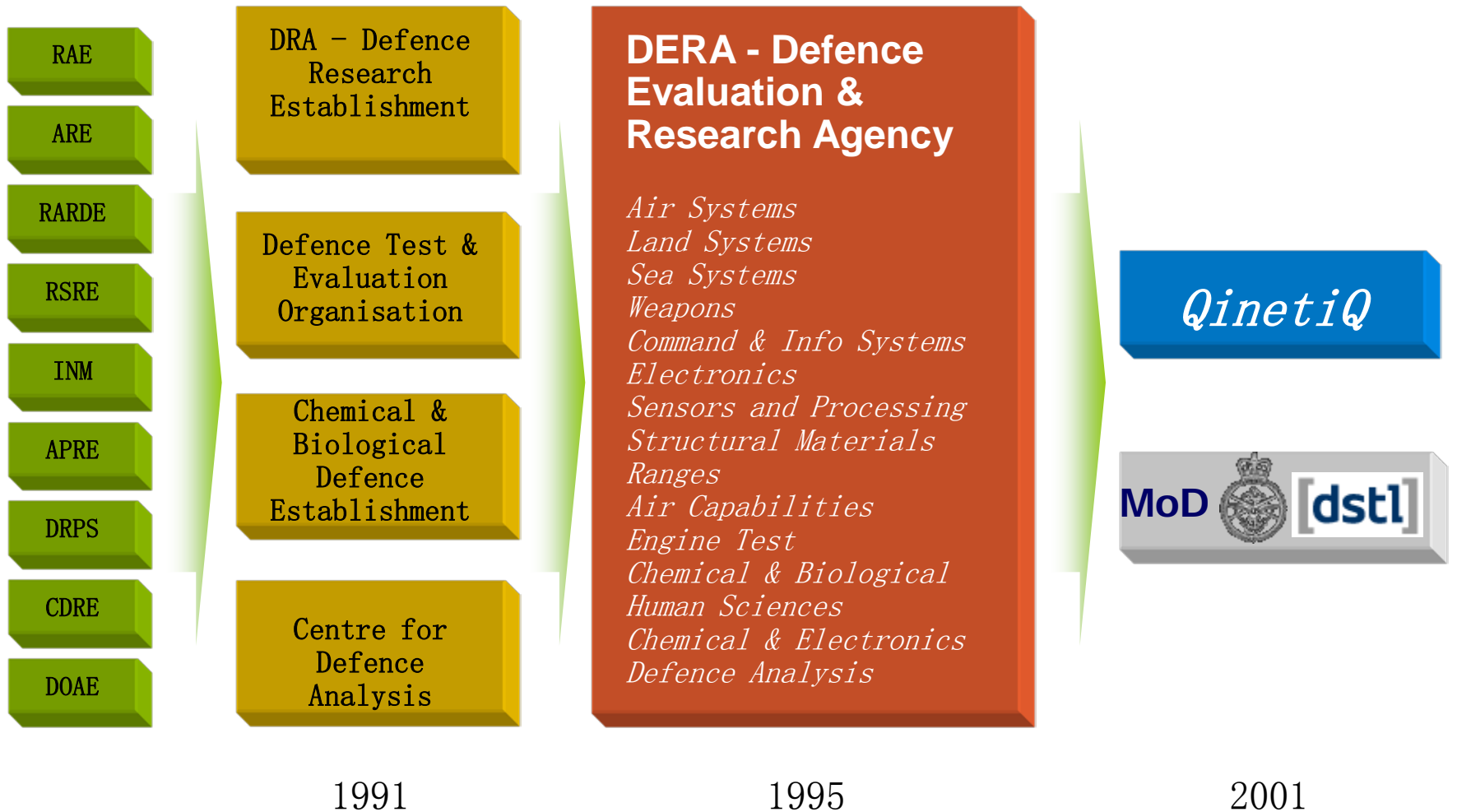
# QinetiQ North America (QNA) Overview

---

2009 Enterprise Architecture  
Conference  
Luncheon



# QinetiQ's Evolution – A Legacy of Decades



# QinetiQ Heritage - some inventions

Acoustic Tiles



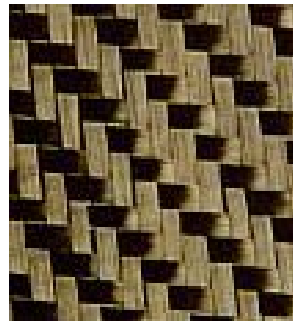
Liquid Crystal Displays



Ion Engines



CMT Devices for Thermal Imaging

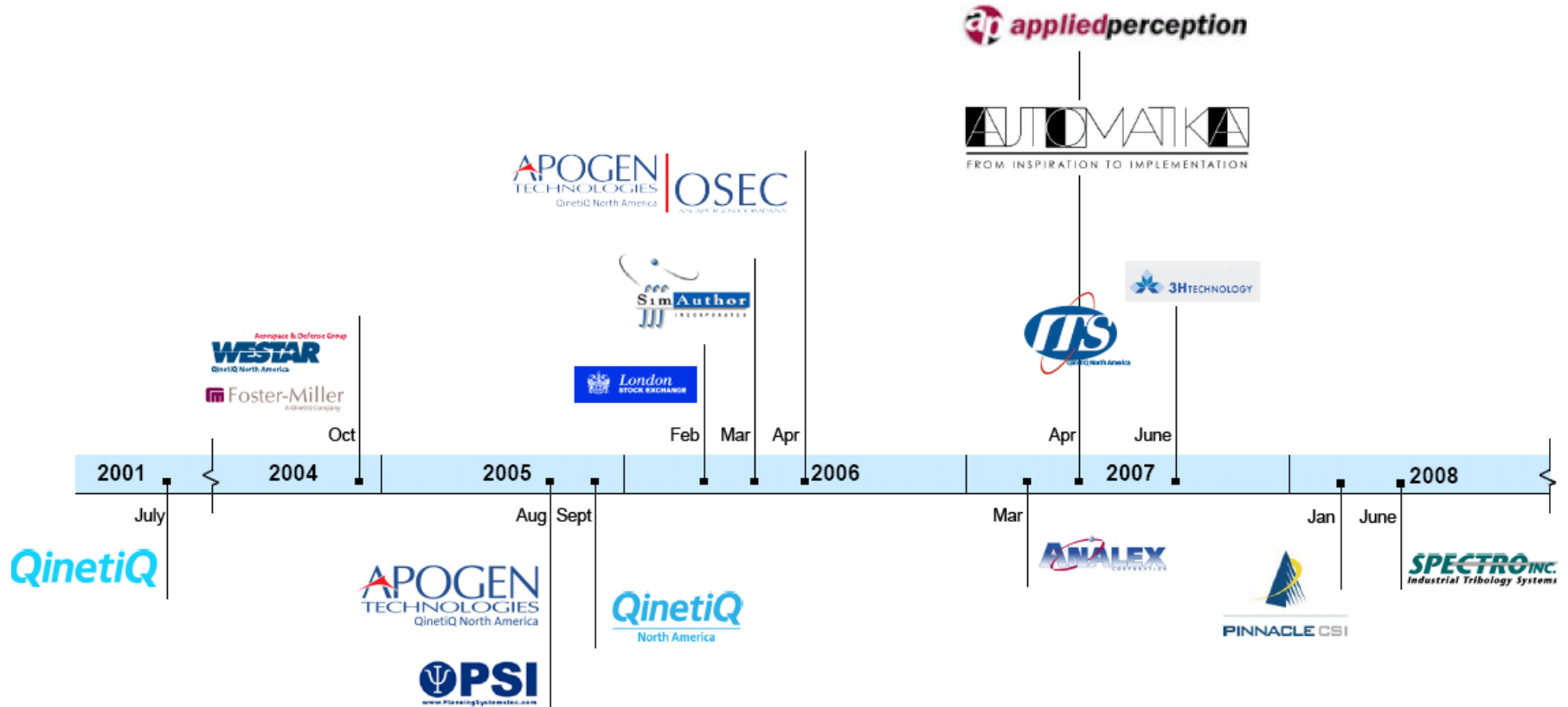


Carbon Fibre

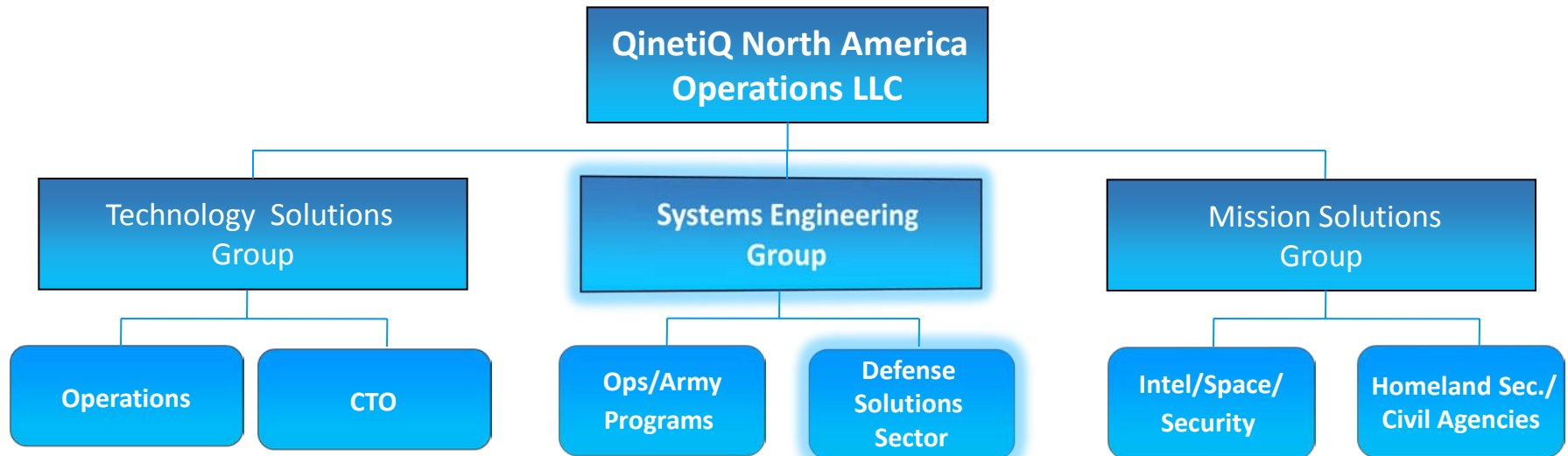


Chobham Armour

# QinetiQ North America (QNA) History



# Today's Organization



Delivers high technology research services and development of defense and security related products to the U.S. Defense, civilian government, and the commercial market.

**Delivers independent procurement services, information technology services, systems and network engineering, computer systems integration, and operations, IT architectures, software development, and education/ training, support for development, modification, fielding, and sustainment of military equipment.**

Delivers software, enterprise systems engineering and integration and other consulting services requiring specialized customer/mission knowledge.

# Customers



- SSC NOLA
- SSC Charleston
- SSC Philadelphia
- SSC San Diego
- Naval Air Warfare Center
- NSWC Dahlgren
- Office of Naval Research
- NAVSEA
- NAVAIR
- PEO NMCI
- PEO C3T
- PEO IWS
- PEO C4I
- ASN RDA
- OPNAV
- NSWC Carderock
- CNRNW
- NAS Jacksonville
- NSWC Panama City
- NSWC Pearl City
- COMSUBPAC
- NAVFAC IT Center (NITC)
- NAWC-WD



- Marine Corps Systems Command
- PG 10-Information Systems and Infrastructure (ISI)
- PG 11-MAGTF C2, Weapons & Sensors Development & Integration
- PG12-Communications, Intelligence & Networking Systems (CINS)
- PG 13-Infantry Weapons Systems (IWS)
- PG 15-Ground Transportation & Engineer Systems (GTES)
- PG 16-Combat Equipment & Support Systems (CESS)
- Dir C4I Systems Engineering & Integration
- PEO Land Systems (CAC2S, EFV)
- MCTSSA
- MCWL



- Army Fire Support Test Directorate
- Army National Guard
- Logistics Transformation Agency
- Communications and Electronics Command
- PM Distributed Common Ground Station-Army (DCGS-A)
- PEO Command, Control, and Communications (PEO C3T)
- PEO Intelligence and Information Warfare Directorate (I2WD)
- Research, Development, Engineering Center (RDEC)
- Army Fort Lewis Department of Public Works
- Army Fort Rucker Aero-medical
- Army Medical Center Tripler
- Wheeler Army Airfield DPW
- PEO Enterprise Information Systems (EIS)
- STRATCOM



- Defense Acquisition University
- Defense Advanced Research Projects Agency
- Joint Unmanned Aerial Systems Center of Excellence
- Decision Support Center, Office of Secretary of Defense
- OSD DDR&E
- PACOM
- SOCOM
- JPAC
- PEO JTRS



- DCGS-AF
- Air Force Research Lab
- Air National Guard

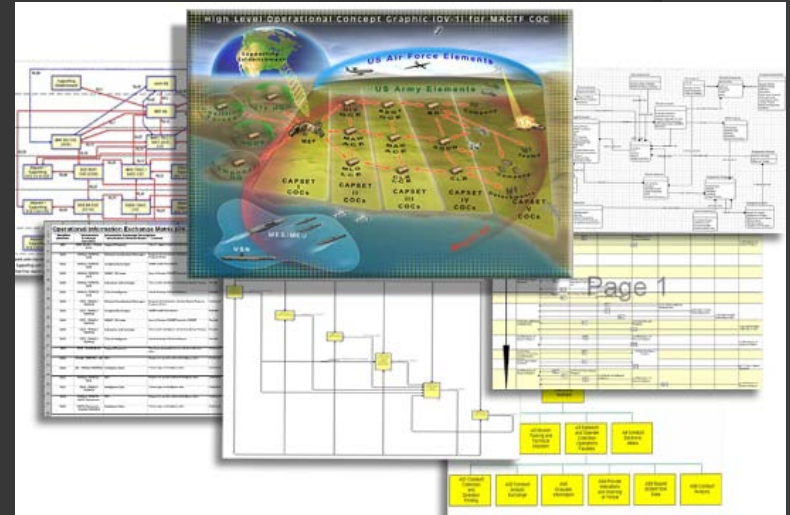


# MAGTF Collaborative Architecture Environment

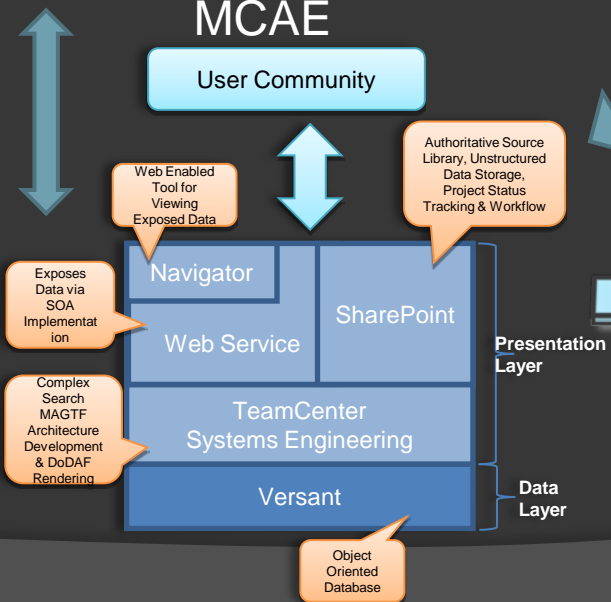
## System of System Engineering



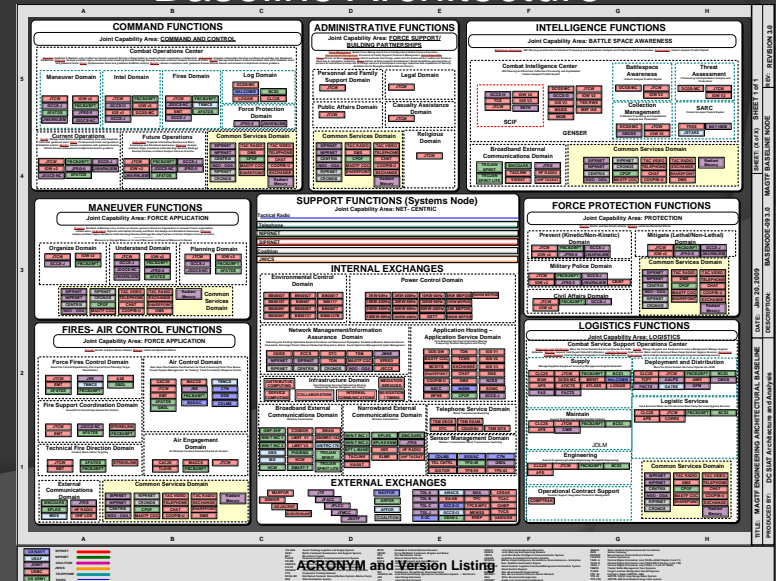
## Process Refinement



## MCAE



## Baseline Architecture



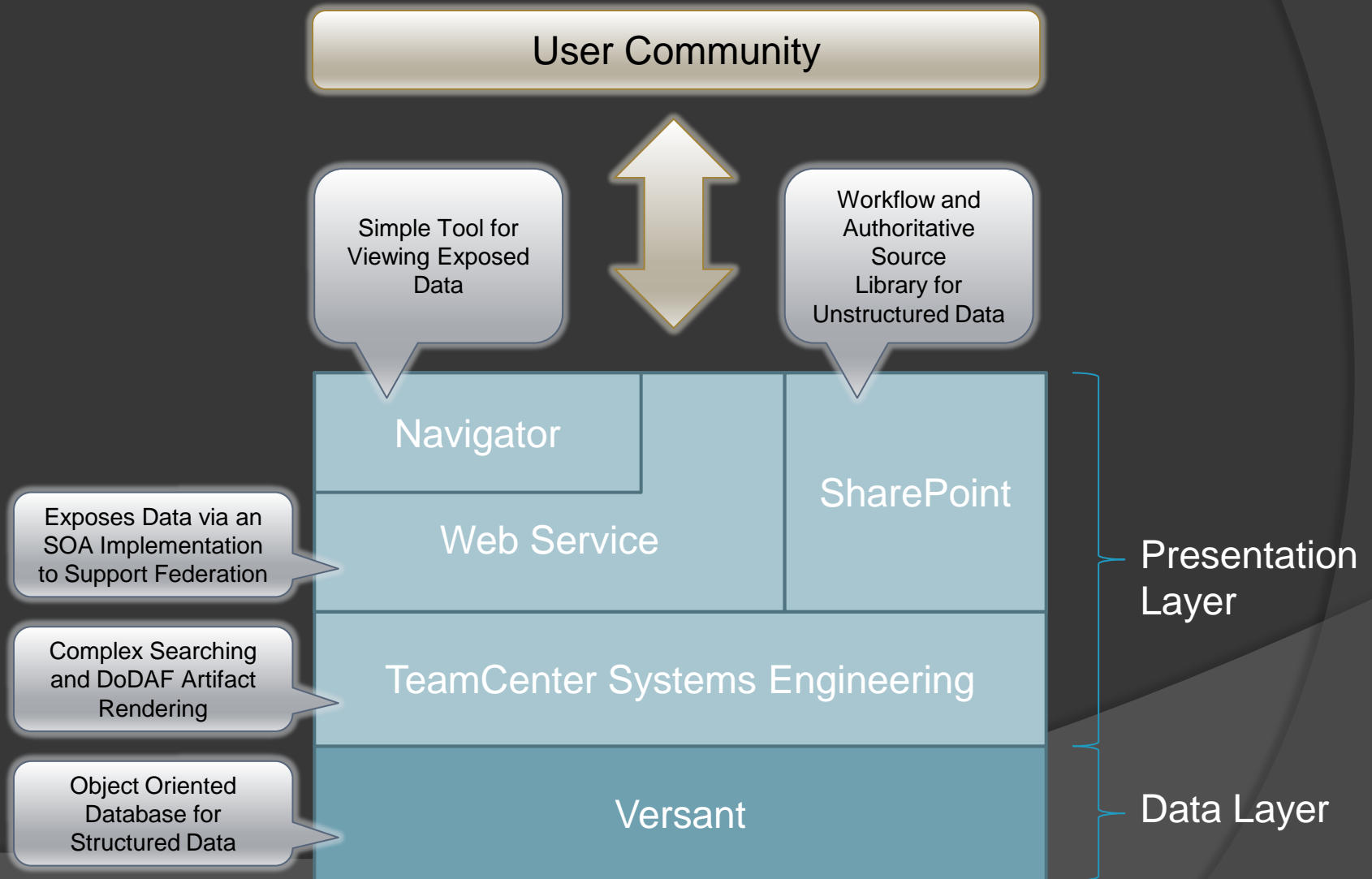
# MCAE Essential Features

- ④ **Provides** storage, manipulation, import, export, custom report generation, and visualization of architecture-related data.
- ④ **Shares** and imports relevant information without the need for intensive user training.
- ④ **Utilizes** a data-centric approach allowing for the management and configuration control of data at the data owner level.
- ④ **Facilitates** object and architecture reuse, reducing timelines associated with future architecture development.

# MCAE Goals and Objectives

- ◎ **Produce** a Single Baseline View of MAGTF.
- ◎ **Align** Capability Development Integration focused on and across the MAGTF.
- ◎ **Provide** senior leaders factual information based on analysis of MAGTF capabilities.
- ◎ **Support** effective and efficient decision making and capital investment planning.
- ◎ **Reduce** architecture cost and development time for product developers through standardization, configuration control, and reuse, based on data.

# MCAE = 5 Primary Components



**QinetiQ North America**

---

**Questions???**

***QinetiQ***  
North America