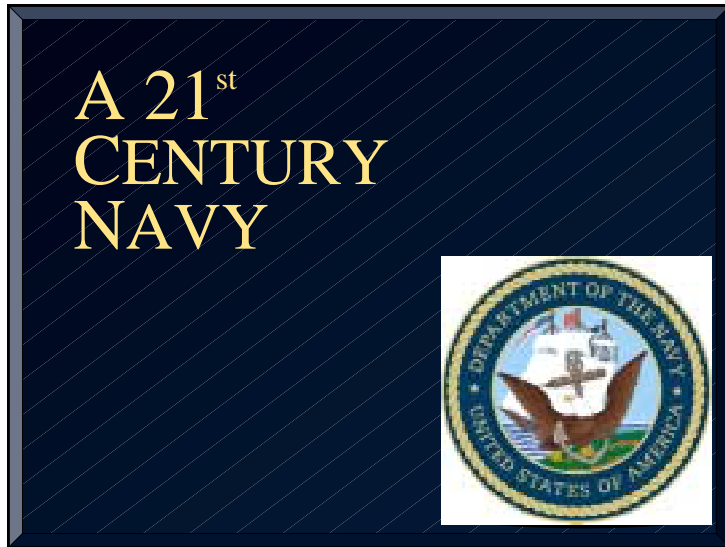


Slide 1



Slide 2



Slide 3

## RETURN ON OUR NATION'S INVESTMENT

- **COMMAND OF THE SEAS**
  - For A Maritime Nation



Slide 4

## RETURN ON OUR NATION'S INVESTMENT

- **COMMAND OF THE SEAS**
  - For A Maritime Nation
- **U.S. SOVEREIGN POWER FORWARD**
  - Timely Crisis Response
  - Power to Shape



## RETURN ON OUR NATION'S INVESTMENT

- **COMMAND OF THE SEAS**
  - For A Maritime Nation
- **U.S. SOVEREIGN POWER FORWARD**
  - Timely Crisis Response
  - Power to Shape
- **ASSURED ACCESS**

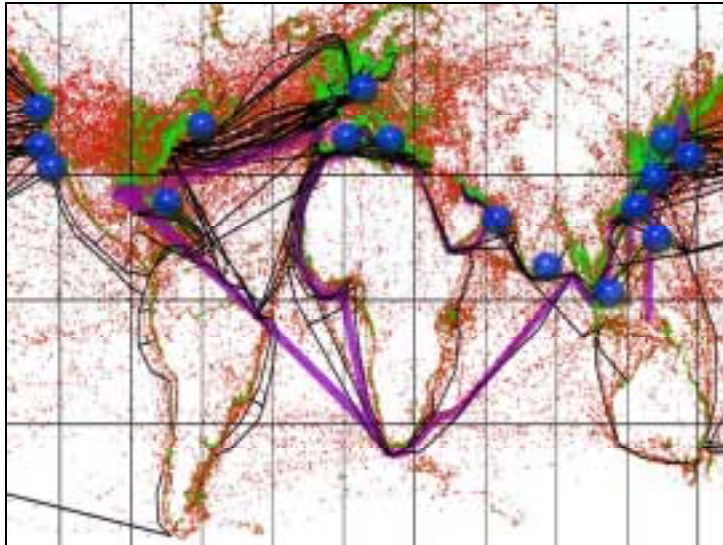


## RETURN ON OUR NATION'S INVESTMENT

- **COMMAND OF THE SEAS**
  - For A Maritime Nation
- **U.S. SOVEREIGN POWER FORWARD**
  - Timely Crisis Response
  - Power to Shape
- **ASSURED ACCESS**
- **ENABLE THE TRANSFORMATION OF THE JOINT FORCE TO FIGHT AND WIN**



Slide 7



Slide 8

**Singapore**

- 300 Million Tons Annually
- One-Fifth of Daily Maritime Trade
- One-Half of U.S. ADP Equipment
- One-Third of Global Trans-shipment Activity

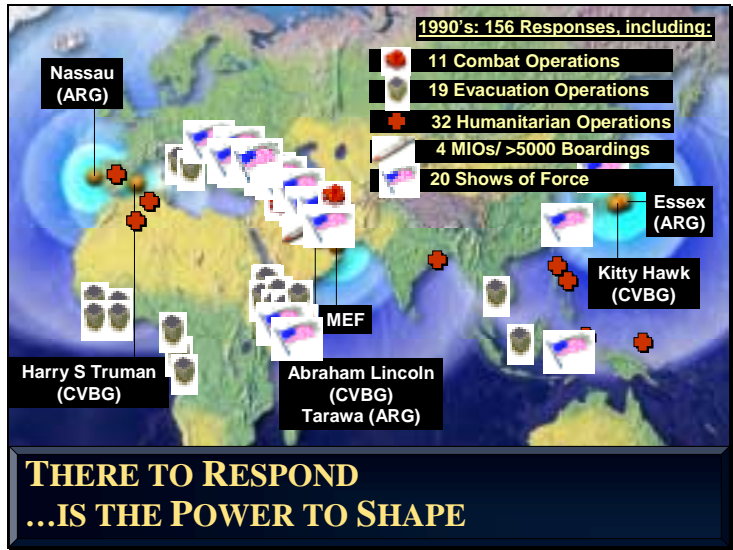
**"The ship is the inventory...  
The New Yorker**

**COMMAND OF THE SEAS**

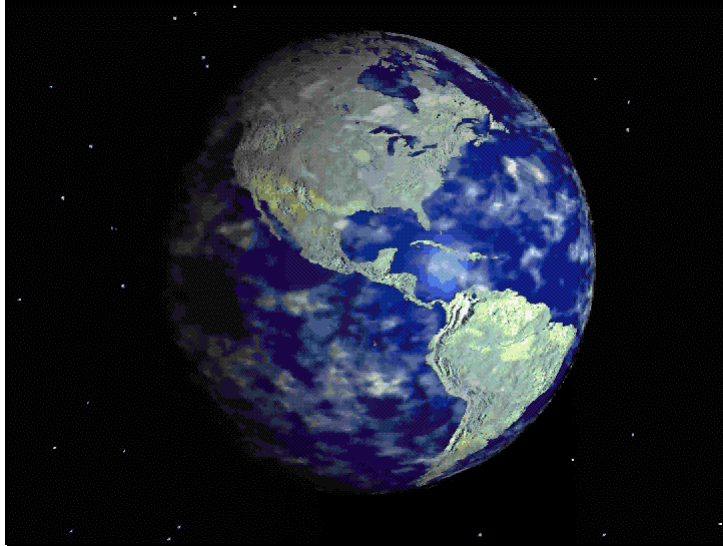
- 99% of Intercontinental Trade Volume
- 80% of Intercontinental Trade Value

Slide 9





Slide 11



Slide 12



Slide 13



Slide 14



Slide 15



Slide 16



Slide 17



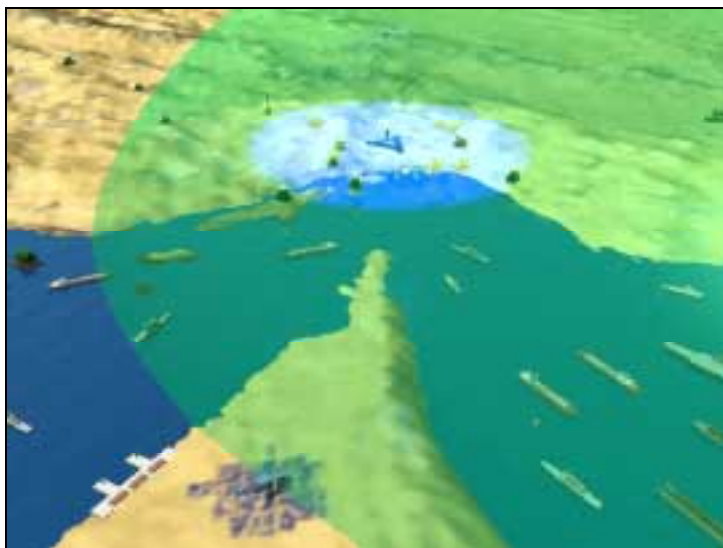
Slide 18



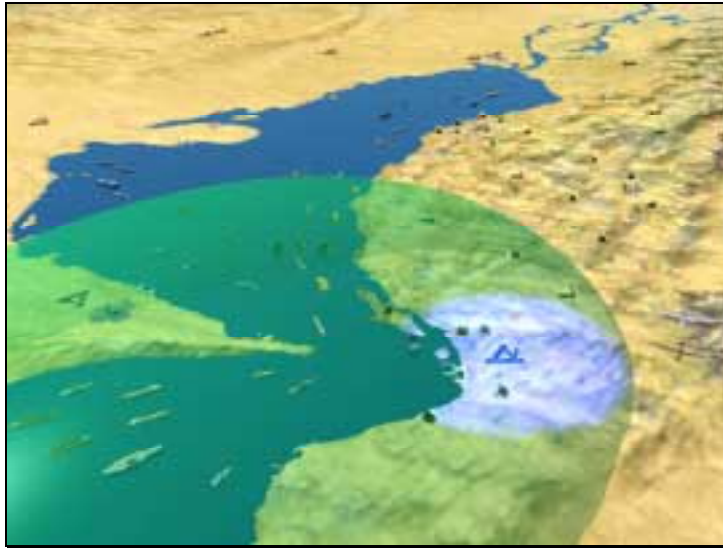
Slide 19



Slide 20



Slide 21





- **USMC: Ship-to-Objective-Maneuver: 200nm**
- **In-stride with Marine Corps Expeditionary Warfare**

- **USA: Brigade in 96 hours**  
Division in 120 hours  
5 Divisions in 30 days

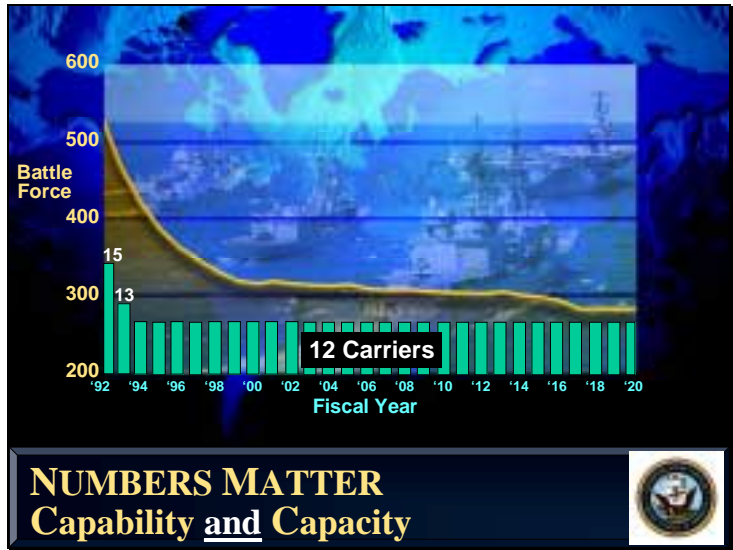
- **USAF: 1 Aerospace Expeditionary Force in 48 hours**  
5 Aerospace Expeditionary Forces in 15 days

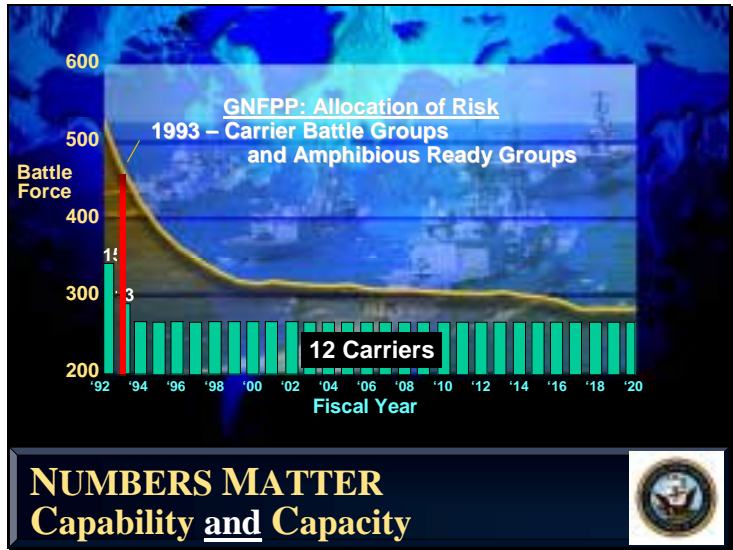
- **Project Defense, "Artillery From the Sea", Sea Control for Army and Aerospace Expeditionary Forces**

**ENABLING THE TRANSFORMATION OF THE JOINT FORCE**

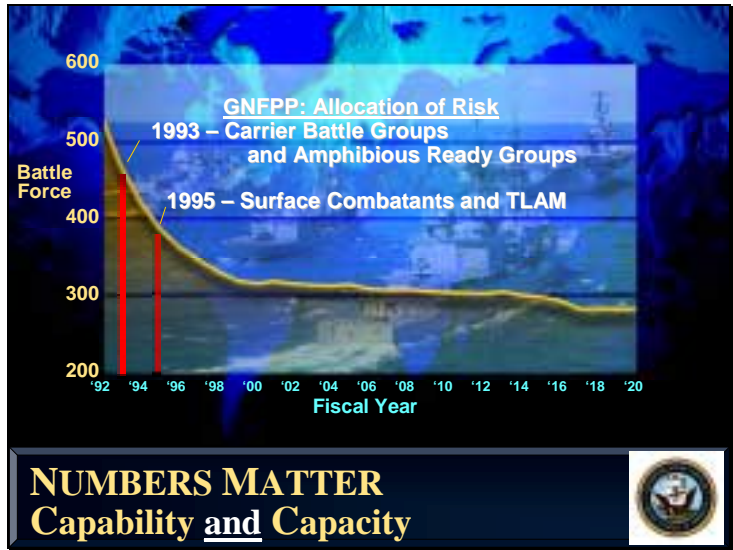
Slide 23



Slide 24



Slide 25



Slide 26



Slide 27



## RETURN ON OUR NATION'S INVESTMENT

- **COMMAND OF THE SEAS**
  - The “Global Commons”
- **U.S. SOVEREIGN POWER FORWARD**
  - Demonstrated Ability to Respond
  - Power to Shape
- **SUSTAINED ASSURED ACCESS**
- **ENABLE THE TRANSFORMATION OF THE JOINT FORCE TO FIGHT AND WIN**



## MARITIME CONCEPT OF OPERATIONS

- **COMMAND OF THE SEAS**
  - The “Global Commons”
- **U.S. SOVEREIGN POWER FORWARD**
  - Demonstrated Ability to Respond
  - Power to Shape
- **SUSTAINED ASSURED ACCESS**
- **ENABLE THE TRANSFORMATION OF THE JOINT FORCE TO FIGHT AND WIN**



## Summary

**“The...vast network that connects information and weapons in new ways...will revolutionize the Navy’s ability to project American power over land and sea, assuring access for all our forces, wherever our vital interests are threatened.”**

*George W. Bush, 4 March 2001*

Slide 31

