



# Logistics *Modernization*

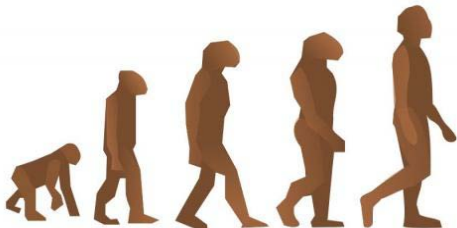
**Status Brief to NDIA**  
BGen Ruark, USMC 12-04-09





# Agenda

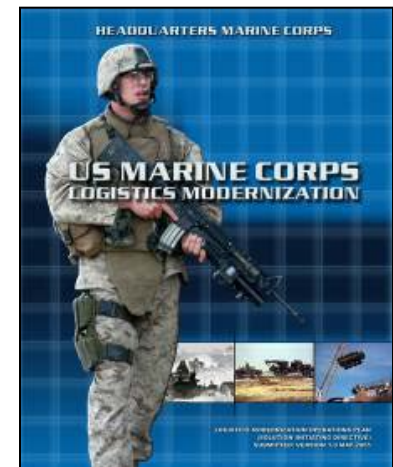
- Overview
- Impacts and Influences
- Current Status
  - LogMod
  - Related initiatives





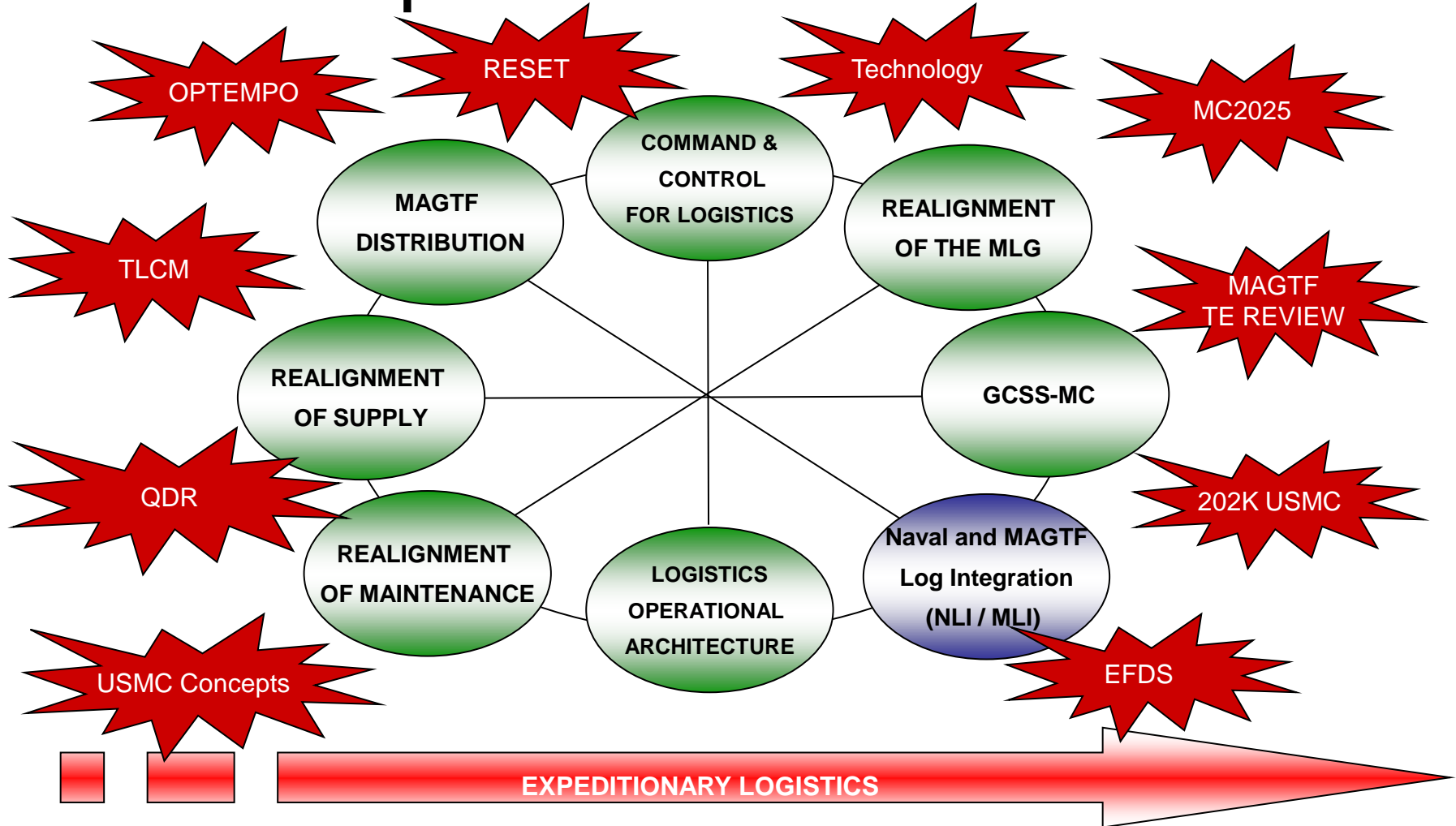
# Overview

- A family of initiatives focused on enhancing Marine Air Ground Task Force (MAGTF) lethality and operational reach, and increasing the effectiveness of the logistics chain in support of the warfighter
- Three-pronged implementation and institutionalization plan:
  - People
  - Processes
  - Enabling Technologies
- Deputy Commandant for Installations and Logistics (DC I&L) engages the Expeditionary Force Development System (EFDS).
- Deputy Commandant for Capabilities Development and Integration (DC CD&I) accepted the Solution Implementing Directive (SID) in Jan 2006





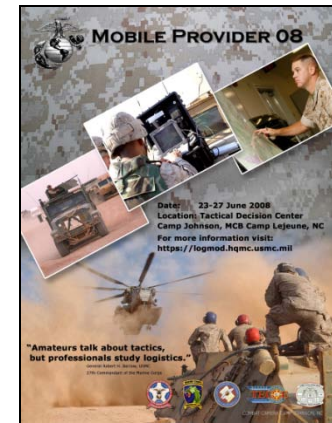
# Impacts and Influences





# Integration Efforts

- Wargaming provides the Marine Corps the opportunity to:
  - Experiment with and discuss new and improved logistics support processes and procedures, and
  - Engage the Operating Forces in development of Logistics Modernization.
- LogMod Wargame IV (Mobile Provider 09) will examine the command and control of field level supply, maintenance, and distribution actions using distributed communications networks





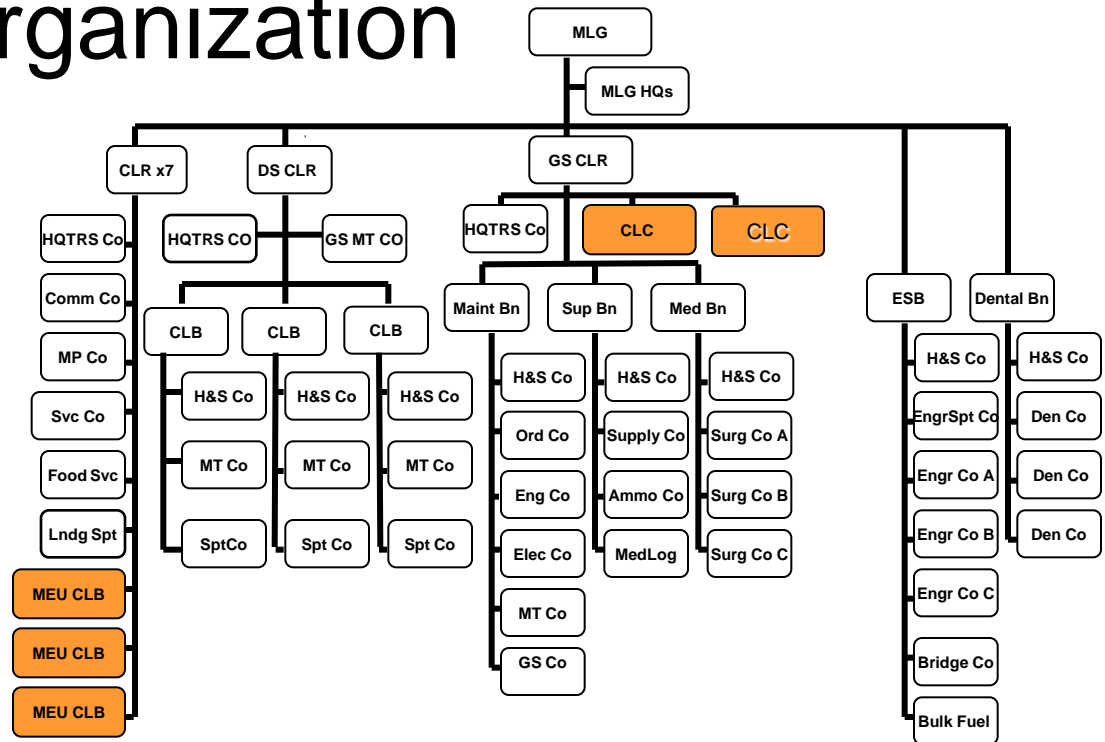
# Logistics Combat Element (LCE) Organization

## Actions Complete

- MLGs have reorganized
- Mission statements approved
- Established MCCs
- 202K LCE Growth
  - DS / GS / MEU CLB
  - MP / EOD / Comm / Intel
- Med Bn Capability
  - FRSSs / STPs / ERCs
- MAGTF and MLG TE Reviews

## Actions Underway

- Increase staffing precedence of the LCE
- Re-look 202K - Capabilities Assessment Review - Does the USMC have it right?
- Review logistics capabilities and capacities in MARFORRES / 4<sup>th</sup> MLG
- Review and refine MEU Combat Logistics Battalion (CLB) and Regiment (CLR) structure





# GCSS-MC Progress

## KEY EVENTS

- **Spring/Summer 09**
  - **Government Developmental Testing and Evaluation (GDT&E)**
  - **Phase 1 & 2 Testing**
  - **Capability Production Document (CPD) Staffing**
- **Oct 09**
  - **Began instructor training**
  - **Completed GDT&E**
- **Nov 09 - Operational Assessment conducted by Marine Corps Operational Testing and Evaluation Activity (MCOTEA)**
- **Dec 09- Feb 10 – Cutover preparation and training at III Marine Expeditionary Force (MEF)**
- **Mar 10 - Go Live at III MEF**





# GCSS-MC Block 1 Architecture

Block 1 of GCSS-MC will be fielded in two releases

## Functional Capabilities

<i>Block 1 Functionality</i>	<i>Request for</i> •Services •Maintenance •Supplies	<i>Real time validated information</i>	<i>Asset status and availability</i>	<i>Release 1.1</i>	
	<i>Warranty tracking and management</i>	<i>Ownership and transfer of assets</i>	<i>Replenishment of supplies</i>		
	<i>Proactive and reactive maintenance</i>	<i>Maintenance history</i>	<i>Approval and funds checking</i>		
	<i>Effective management of resources</i>	<i>Escalation of requests</i>			
	<i>Operating Systems, IA, Security, etc</i>				
	<i>Hardware (Servers, Databases, etc.)</i>				

**Release 1.1**  
**(Capability Release 1)**

## Deployed Access

Data synchronization  
Deployed ↔ CONUS

SIPR to NIPR  
Data Transfer  
(Cross domain)

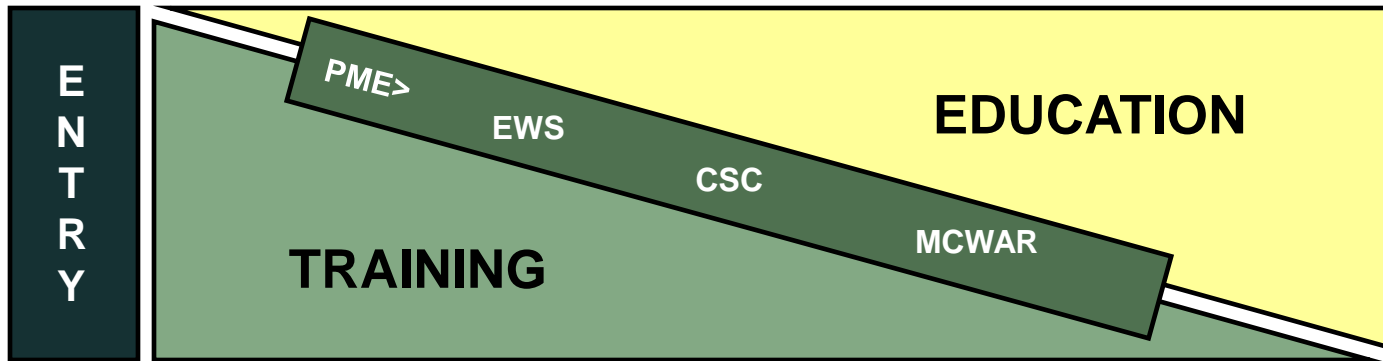
**Release 1.2**  
**(Capability Release 2)**

**GCSS-MC**  
**Block 1**

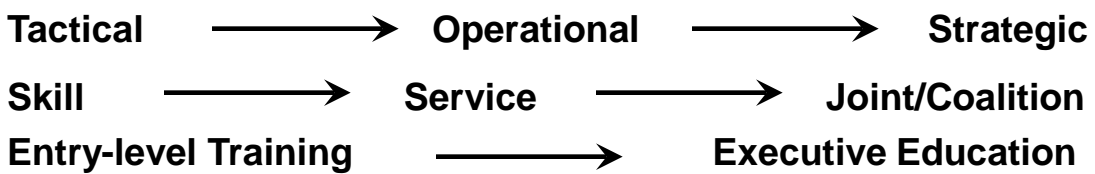


# Training & Education Continuum

TLOC ALOC/MCLEP LOGTECH LOGTECH/EXEC



2dLt	1stLt	Capt	Maj	LtCol	Col	Gen
Pvt-LCpl	Cpl/Sgt	SSgt/GySgt	MSgt/1stSgt	GySgt/SgtMaj		
GS-7/8	GS-9/10	GS-11/12	GS-13	GS-14	GS-15	SES



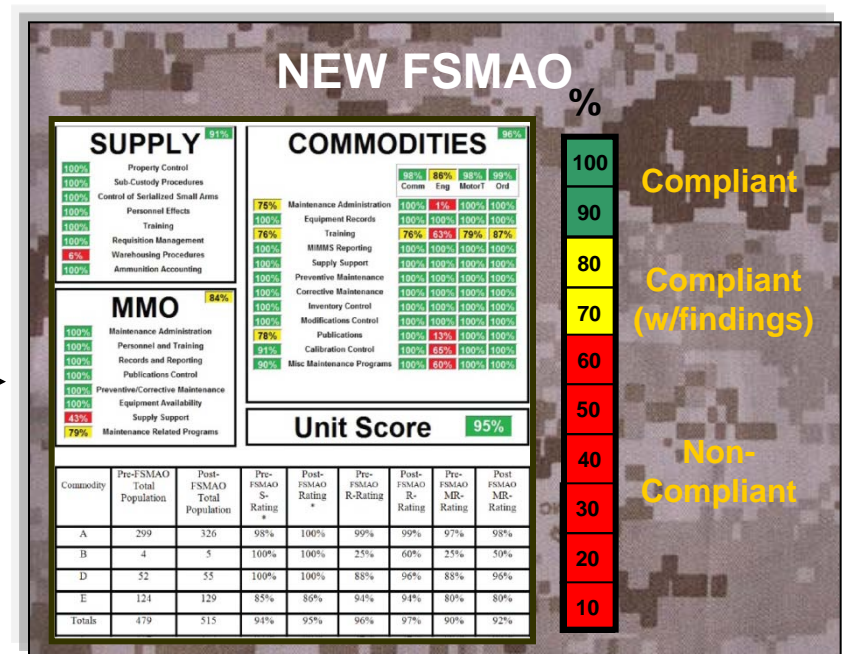


# Logistics Modernization

## Field Supply and Maintenance Analysis Office (FSMAO)



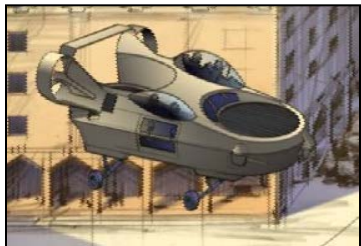
- Compliance Inspection
- Reporting
- Checklist
- Training
- Stove-piped



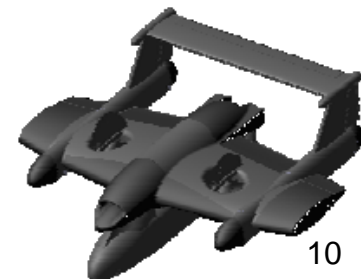
- Managerial Control
- Mentoring (+)
- Training (+)
- Reporting
- Sustainment
- Program Review
- LogMod Initiatives
- Management Control
- Distribution
- Trends Analysis
- CPI
- Integration-Readiness



# Cargo Unmanned Aircraft System (Cargo UAS)



- **Speed:** Up to 250 kts
- **Range:** 35NM off-shore / 250NM inland
- **Cargo:** Up to 1,600 lbs (internal/external)
- Four (4) Multiple Payloads
- **Movement:**
  - TEU / mobile-load or minimum Sq (Amphibs)
- Ability to redirect Resupply Missions
- Auto Launch/Recovery
- Preserve Tilt & Rotary Wing assets
- A “**Flying Truck**”

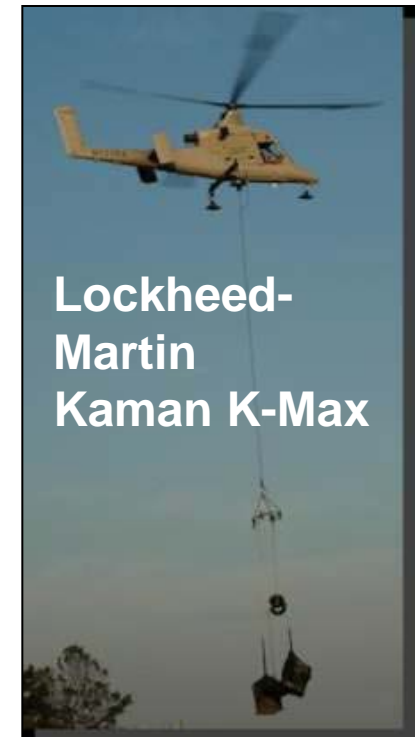




# OEF Support

Spring/Summer 2010

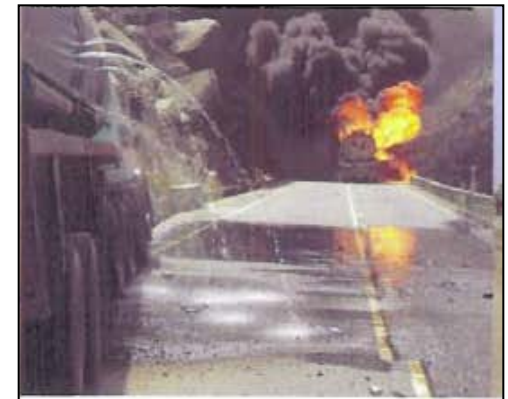
- Two (2) Bidders selected for Services Contract
- Move 6,000Lbs in less than 6 Hrs for 3 consecutive days





# Expeditionary Energy Initiatives

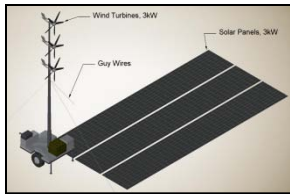
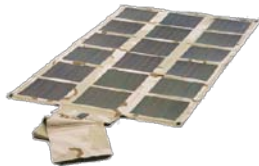
- Establish Experimental Forward Operating Base (EFOB)
- Evaluate Material solutions to facilitate power, water purification and distribution, climate control, etc.
- Partnership – Marine Corps Systems Command - Warfighting Lab, Office of Navy Research, Army
- End state: Fewer tactical convoys and casualties



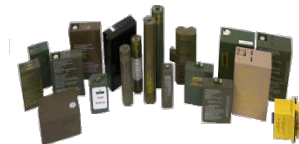


## EFOB Concept

- Operator - Combat Development Command
- Quantico Combat Town
- Vendors demonstrate energy efficient technology



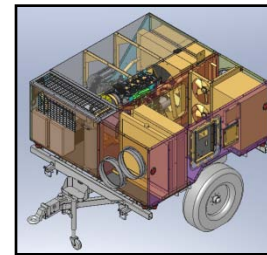
Renewable and Alternate Power Sources



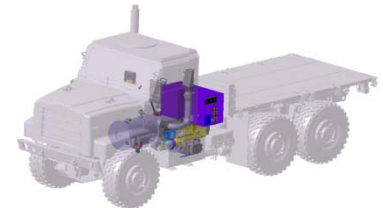
Portable Recharging Sources  
And better Energy Storage



More efficient Climate Control  
Systems



Integrated Power/Climate Control  
Systems



Onboard Exportable  
Vehicle Power Systems



Improved Temporary Facilities  
Insulation



# LogMod Way Ahead

- Continued evolution
- Integrated perspective
- Vetting through the EFDS Process
- Linked to Vision and Strategy 2025



Logistics  
*Modernization*

# BACKUPS