



CBDP T&E Collaboration with Industry

Mrs. Terri Kocher

Chief, CBDP T&E Division

US Army Test & Evaluation Management Agency (TEMA)

For the

Chemical and Biological Defense Program (CBDP)

Test & Evaluation Executive

8 Feb 07



Objectives



- Inform industry of the CBDP T&E Executive's mission and philosophy
- Propose ways to collaborate with industry



CBDP T&E Executive and TEMA Mission



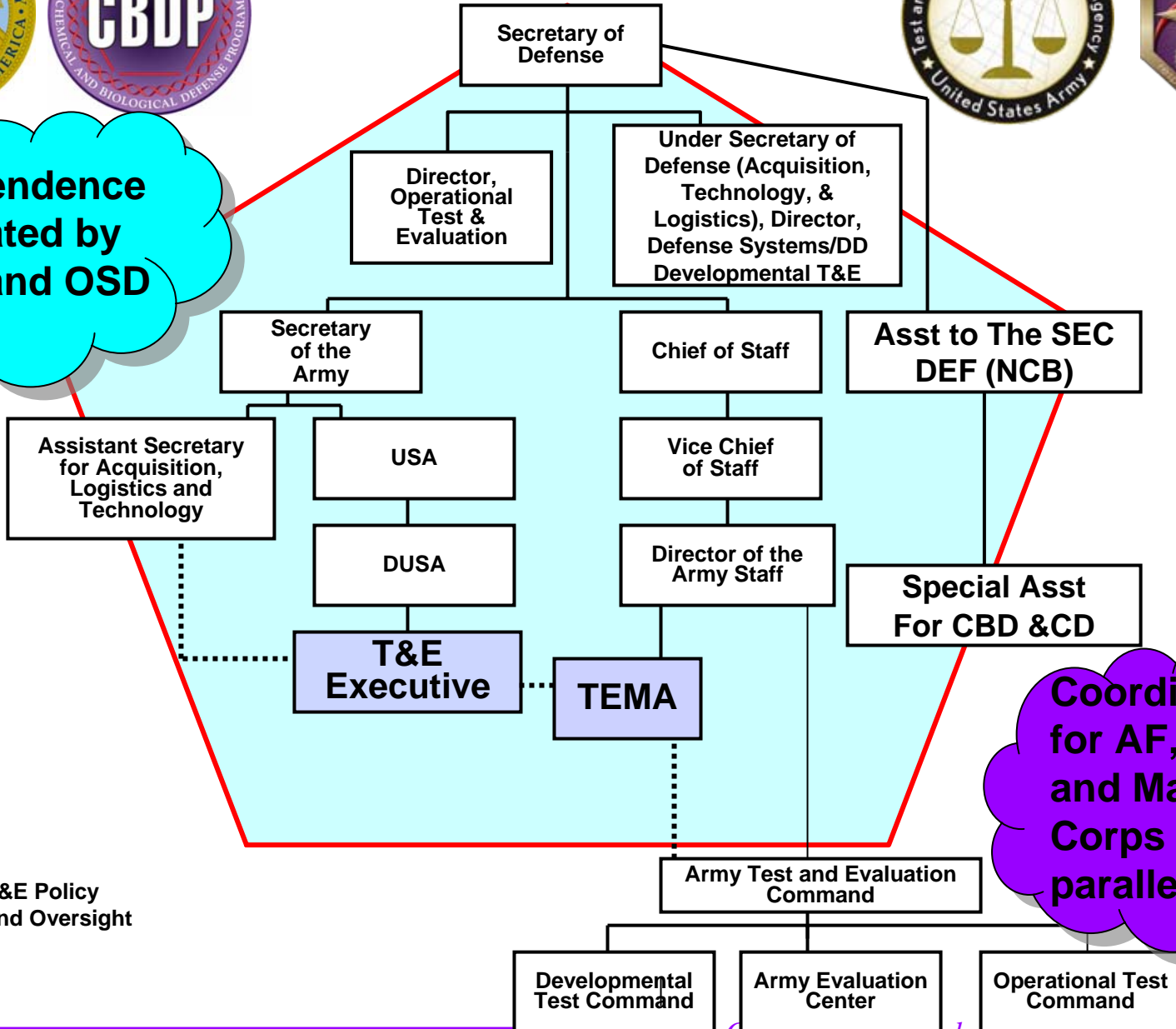
- **T&E Executive is established to be independent:**
“Honest Broker” -- provide oversight, integration to help programs be more successful
 - Establish common set of processes, procedures, and standards for CBDP T&E
 - Ensure outcomes of testing are credible and useful
- **Army T&E Management Agency (TEMA) CBDP T&E Division provides mission support**

Organization



Independence Mandated by OMB and OSD

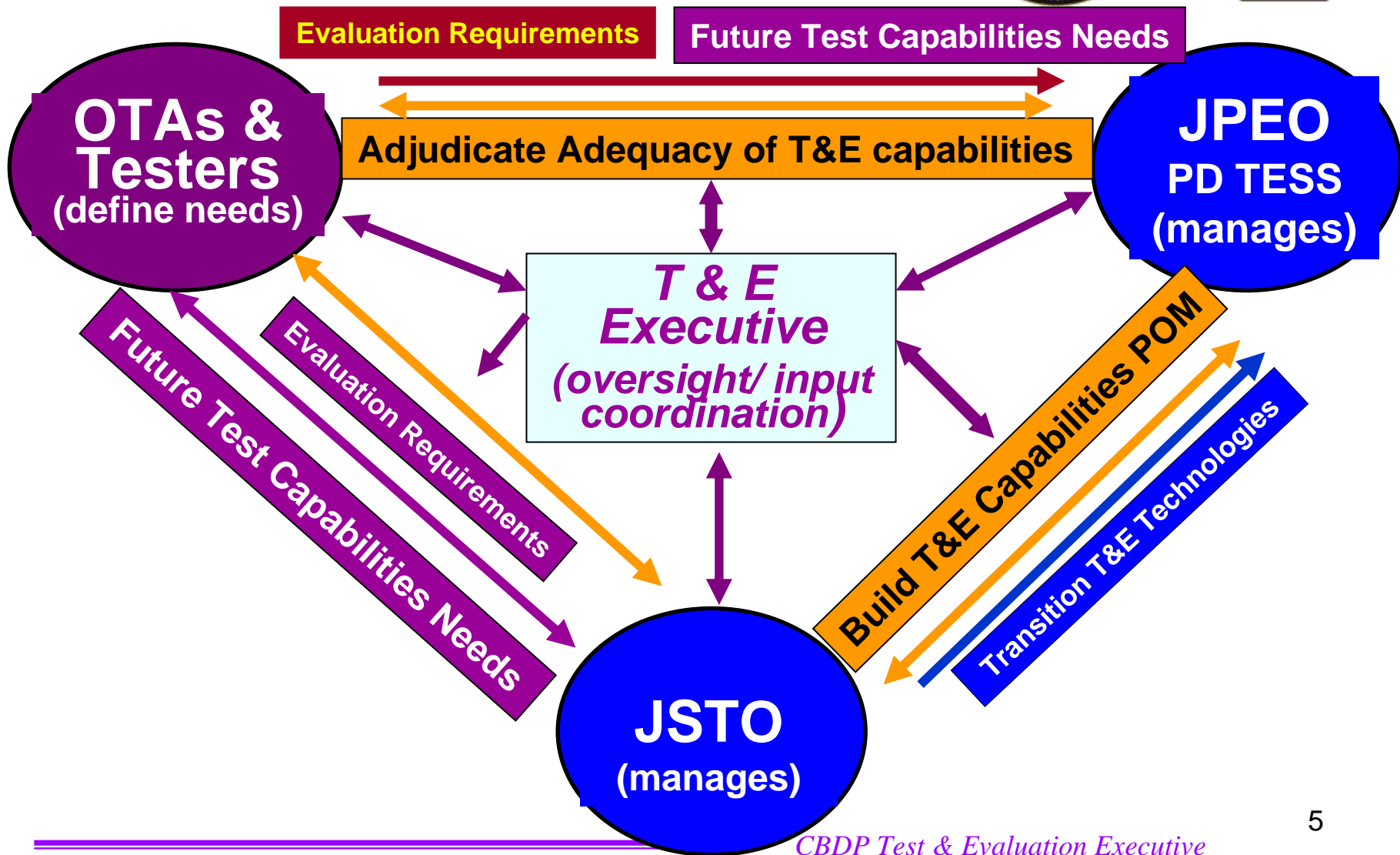
Coordination for AF, Navy, and Marine Corps T&E parallels Army



..... T&E Policy and Oversight



Acquisition/Management of T&E Infrastructure Investments





General T&E Concepts and Where We Need Your Help



- **Goal: Maximize use of all data:**
 - Use validated, standardized test methods.
 - Design of Experiments (DOE) to link, maximize use of all test data.
- **Confirm item performance prior to operational field testing**
 - need to leverage all data
- **Use of simulants requires correlation with agent performance, validation, and accreditation**
 - simulants are part of “system development”
- **T&E must be based on authenticated threats**
- **Focus on defining performance envelope and mission accomplishment**
 - must know how system works



What We Need Industry to Bring to the “T&E Table”



- **Input to Standard Test Methods**
- **Systems to test and supporting data:**
 - Hardware
 - Software, training packages
 - Test technology, unique test considerations
 - Simulant(s) with correlation to agent performance
- **Assist testers in understanding how system works, how best to characterize the system**



SUMMARY



- **CBDP T&E Executive provides:**
 - ✓ oversight and integration of T&E efforts
 - ✓ common set of processes, procedures, and standards
- **Independent T&E validates/characterizes system capabilities and performance**
- **Close collaboration with industry needed to help bring full “system” to test**
 - ✓ system and support: hardware, software, simulants
 - ✓ knowledge of how the system works
 - ✓ data sharing



Backups



CBDP Structure



OSD Oversight

ATSD (NCB)

SA(CBD & CD)

DOT&E
(General;
non CBDP)

Defense Acquisition
Executive
(USD-ATL)

Army Acquisition
Executive
(ASA-ALT)

Joint Program
Executive
Officer

JPM-NBC CA

PD TESS

Requirements

Joint Staff

Joint Requirements
Office
J-8

Joint Combat
Developer

Joint Threat Support,
Doctrine, Training,
and Experimentation

Science & Technology

DTRA-CB -- Joint Science &
Technology Office (JSTO)

Test & Evaluation

CBDP Test & Evaluation
Executive

Executes acquisition
of T&E capabilities

Focal Point for
T&E involvement,
Investment Strategy

P.L. 103-160



Industry providing agent data



- **DOD programs sponsor live agent testing in specified, controlled surety facilities**
- **DOD does not have legal authority to provide or allow use of its agent for non-USG purposes**
- **Options:**
 - Use agent produced for permitted (but not CWC “protective”) purposes
 - Compete for S&T, Requests for Proposals for DOD and other USG projects



Importance of T&E



- **Critical to design of systems**
- **Critical to support acquisition decisions**
- **Critical to ensure Commanders know how to use fielded capabilities**



Importance of T&E to all stakeholders



- **T&E must be:**
 - a series of related events to include developmental and operational testing (DT and OT)
 - reasonable, responsive, & timely
 - cost effective
 - threat realistic, mission focused
 - credible: using approved, validated methods
 - community agreed



Characteristics of CB T&E



- **Complex, technically challenging, and serves diverse customers**
- **Often data must be compared or integrated across events/data sources**
- **Thus → T&E Executive requires standardized, validated T&E capabilities to ensure credible testing**
- **Key concepts in T&E are independence, credibility, and ability to provide a realistic test threat environment**

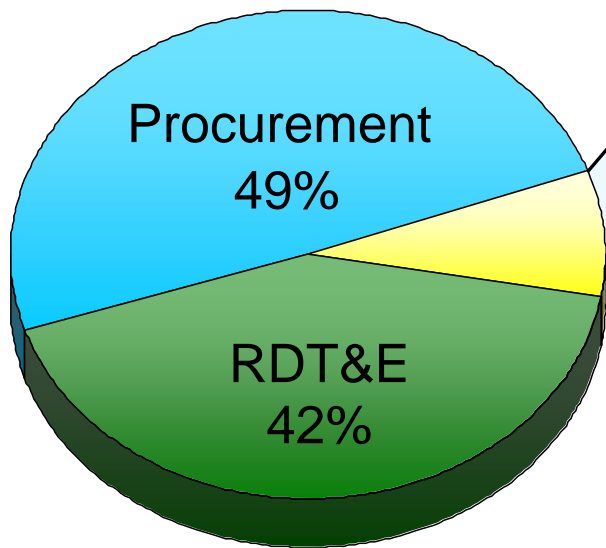


T&E Infrastructure



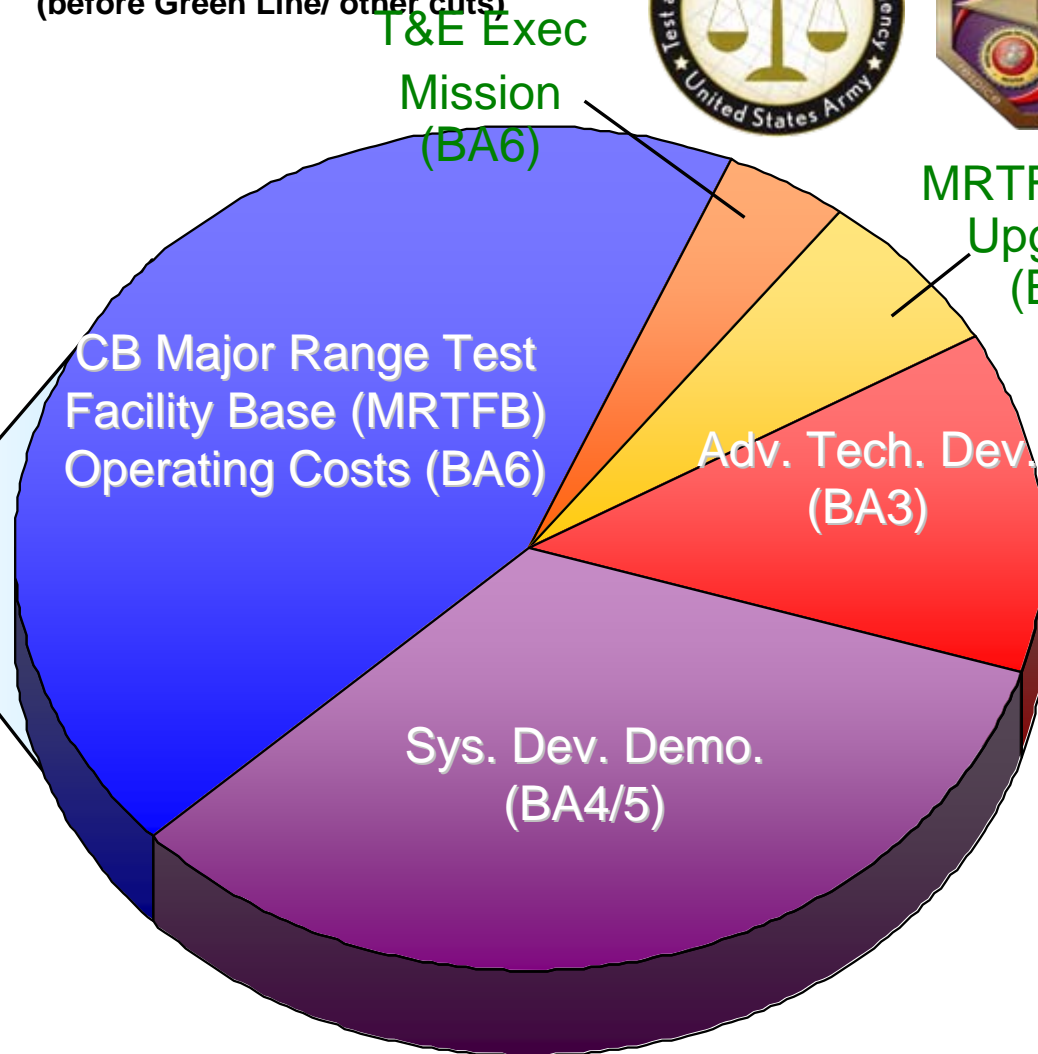
CBDP FY 06-11 PB

(before Green Line/ other cuts)



CBDP
\$9,110M

BA3, 4, 5 funds are addressed within JSTO and JPEO programs



T&E Investment
9%



Current and Future Directions for T&E Infrastructure



Chemical and Biological Defense System Test Capabilities:

- **Chambers that can generate realistic threat agent environments**
 - Detectors
 - Decontamination Systems
 - Individual Protection
 - Collective Protection
- **Whole System Live Agent Test (WSLAT) Bio Warfare Agent Chamber**
 - non negotiable



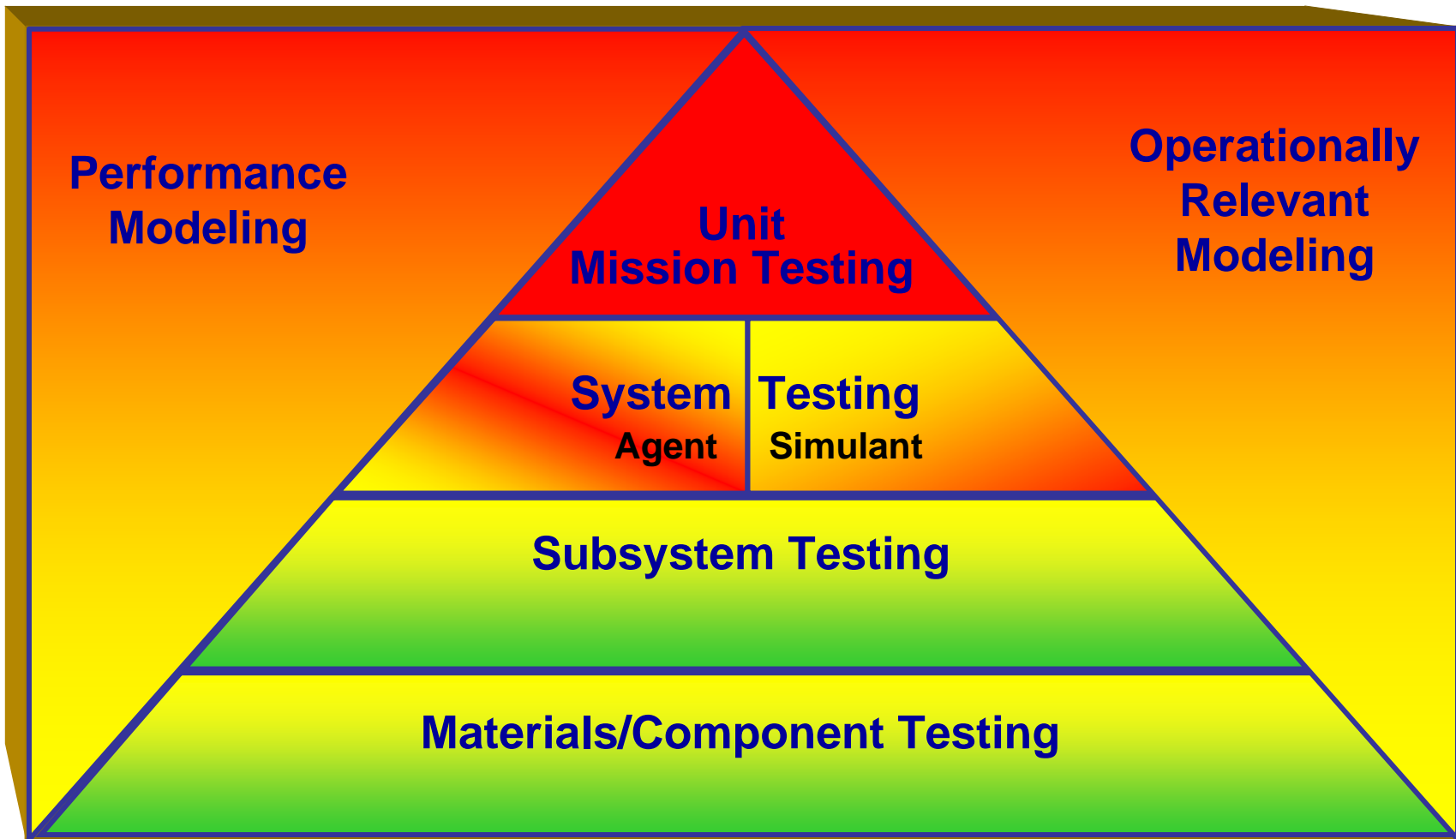
Current and Future Directions for T&E Infrastructure (cont.)



- **Bio Stand Off Chamber Feasibility Study**
 - focus on what level of Agent/Agent-like Organisms (ALOs) can be used safely
- **Focus on Correlation of Agent to Simulant Performance**
 - Development of simulants for use in OT must include environmental permissions and safety factors up front
- **Field operational test instrumentation to test natural environments**
- **→ Standardized, Validated Test Operating Procedures (TOPs)**



FY 06 T&E Capabilities





FY 09-10 T&E Capabilities

